

\$850,000 - 4327 Lower Honoapiilani Rd 1204b, Napili/Kahana/Honokowai

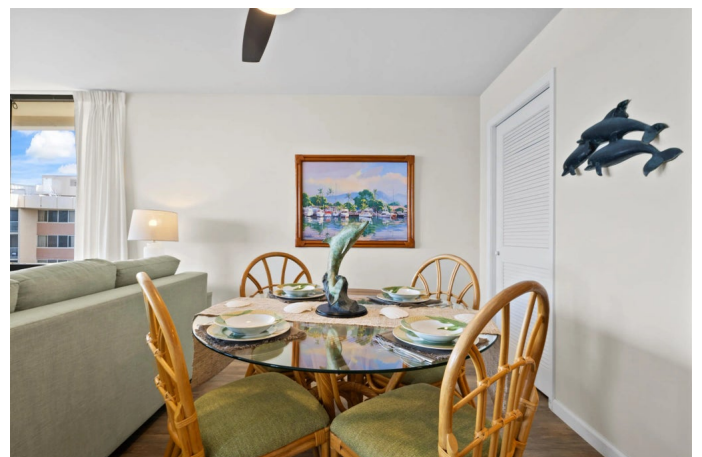
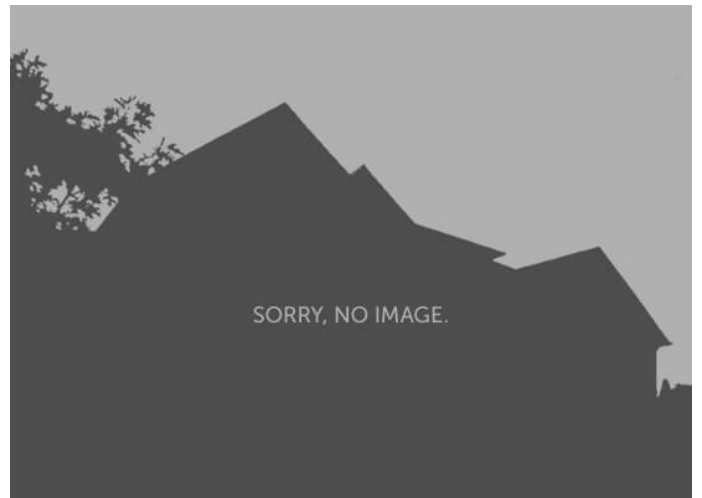
MLS® #401444

\$850,000

1 Bedroom, 1.00 Bathroom, 768 sqft
Residential on 3.05 Acres

Valley Isle, Napili/Kahana/Honokowai, HI

Discover unparalleled oceanfront living in Unit #1204B at the Valley Isle Resort in Kahana, Maui. Enjoy the soothing sounds of the waves from your two private lanaiâ€™s while watching breathtaking year round sunsets and whales at play. This is an exquisitely remodeled and generously sized 1 bed/1 bath corner penthouse unit that spans 768 sq ft of interior space with an additional 175 sq ft of lanai. The kitchen and bathroom have been tastefully upgraded with wood cabinets, granite countertops, recessed lighting, and new flooring throughout. What canâ€™t be overstated are the MASSIVE ocean views from every angle inside the living room, kitchen and bedroom! You, your family and guests will enjoy lots of room to live, relax, entertain or just stare endlessly at that Pacific Ocean view! Perched on the top/twelfth floor, it boasts breathtaking views of Kahana Bay, and the year round sunsets framed by the islands of Molokai and Lanai. This fully furnished retreat is just a stone's throw from Kahana Gateway and Kahana Manor shopping center with lots of shops and eateries, not to mention a short paddle to my personal two favorite surf breaks in all of West Maui - S-Turns and MushroomS! Valley Isle is perfectly nestled between the world class resort areas of Kapalua and Kaanapali including nearby access to most pristine beaches and best snorkeling spots the West



side of Maui has to offer. Whether you're seeking tranquility on your spacious lanai, luxury living with unparalleled views, or the convenience of a prime location, then unit #1204B offers West Maui vacation condo living at its finest. This condo comes fully furnished, including a washer and dryer . Valley Isle recently added a stunning brand new covered portico entry area with lobby, reception desk, seating area w/Koi pond and has amenities such as barbecue grills, a swimming pool, an onsite office/management, and that highly sought after sandy beach front access! The maintenance fee covers utilities, garbage collection, sewage, water, basic television service, and insurance for the building's exterior. Electricity costs are individually metered and are the responsibility of the owner. Available fully furnished and ready to welcome you as your new maui home or as a lucrative vacation rental.

Built in 1975

Essential Information

MLS® #	401444
Price	\$850,000
Bedrooms	1
Bathrooms	1.00
Square Footage	768
Land Tenure	Fee Simple
Acres	3.05
Year Built	1975
Type	Residential
Sub-Type	Condominium
Style	High-Rise 4+ Stories
Status	Closed
Sold Price	\$850,000

Community Information

Address	4327 Lower Honoapiilani Rd 1204b
---------	----------------------------------

Area	Napili/Kahana/Honokowai
Subdivision	Valley Isle
City	Napili/Kahana/Honokowai
State	HI
Zip Code	96761
Condo Name	Valley Isle Resort

Amenities

Utilities	Phone Connected, Cable Connected
View	Ocean
Is Waterfront	Yes
Waterfront	Ocean Front
Has Pool	Yes
Pool	In Ground
Vacation Rental	Yes

Interior

Interior Features	Ceiling Fan(s), Furnished, Inventory, Kitchen Ware, Linens, TV Cable
Appliances	Dishwasher, Disposal, Dryer, Microwave, Range, Refrigerator, Washer

Exterior

Exterior Features	Putting Green
Windows	Drapes
Roof	Asphalt/Comp Shingle

Additional Information

Date Listed	March 8th, 2024
Days on Market	84
Zoning	Hotel District
HOA Fees Freq.	Monthly
Monthly Maintenance Fee	\$1,668

Listing Details

Listing Office	Real Broker LLC
----------------	-----------------

Listings provided courtesy of the REALTORS® Association of Maui. IDX information is provided exclusively for consumers' personal, non-commercial use and may not be used for any purpose other than to identify prospective properties consumers may be interested in purchasing.