

\$1,450,000 - 148 Ehilani St, Pukalani

MLS® #399316

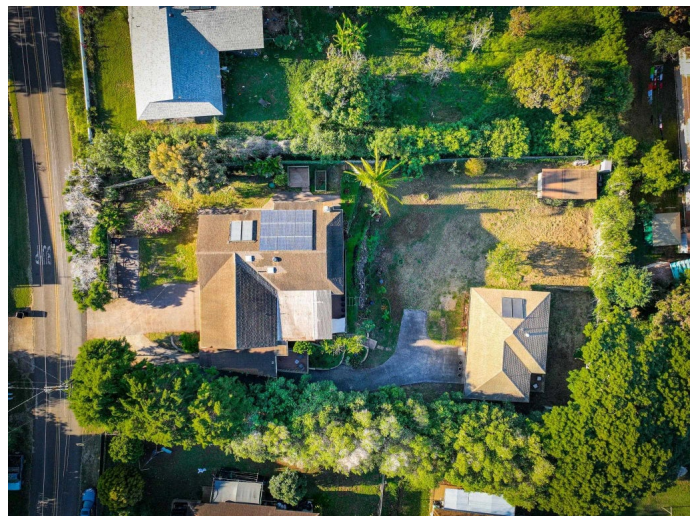
\$1,450,000

3 Bedroom, 2.00 Bathroom, 1,214 sqft

Residential on 0.51 Acres

N/A, Pukalani, HI

Looking for an income-generating investment property or multi-generational living on a spacious lot within walking distance to Pukalani Park, stores, and restaurants in beautiful upcountry Maui? Look no further! Here you will find a three-bedroom, one-bath main house with an attached studio including a full bath and a detached three-bedroom, two-bath cottage nestled in a lush private half-acre lot. The main house has a large covered lanai, skylights in the kitchen and bathroom, a fireplace, built-in shelving, recessed lighting, hardwood floors, and natural light throughout, all with an ocean view, including the West Maui Mountains and Molokai. The attached studio Ohana has two private entrances and an entryway through the connected one-car garage and carport. With a private deck, it is well suited as a rental or mother-in-law suite. The detached cottage is found at the end of the driveway, with multiple parking spaces. This three-bedroom, two-full-bath detached cottage boasts a private deck with a laundry closet and a split-bedroom floor plan. The property is lush with greenery, mature trees, an irrigation system, fully fenced with a sliding gate entry and is equipped with a PV solar. You will find a well-constructed shed in the lower corner of the lot with storage space or extra space for creativity. In addition, near the main house, you will find a separate small deck with an ocean view and electricity, the perfect size for a hot tub. From the front of the property, you have spectacular views of



Haleakala, truly giving Pukalani its name, the heavenly gate. This amazing upcountry opportunity will not last long! Schedule your private showing now!

Built in 1978

Essential Information

| | |
|----------------|---------------------------|
| MLS® # | 399316 |
| Price | \$1,450,000 |
| Bedrooms | 3 |
| Bathrooms | 2.00 |
| Square Footage | 1,214 |
| Land Tenure | Fee Simple |
| Acres | 0.51 |
| Year Built | 1978 |
| Type | Residential |
| Sub-Type | SF w/Det Ohana or Cottage |
| Status | Closed |
| Sold Price | \$1,450,000 |

Community Information

| | |
|-------------|----------------|
| Address | 148 Ehilani St |
| Area | Pukalani |
| Subdivision | N/A |
| City | Pukalani |
| State | HI |
| Zip Code | 96768 |

Amenities

| | |
|-----------------|-----------------|
| Parking | Carport, Garage |
| # of Garages | 1 |
| View | Mountain/Ocean |
| Waterfront | None |
| Vacation Rental | No |

Interior

| | |
|-------------------|---|
| Interior Features | Bookcases, Ceiling Fan(s), Chandelier, Storage, Workshop, Ceiling Fan |
| Appliances | Dryer, Range, Refrigerator, Solar Hot Water, Washer, Microwave, Solar |

Water Heating, Washing Machine
Fireplace Yes

Exterior

Exterior Features Lawn Sprinkler

Additional Information

Date Listed July 6th, 2023

Days on Market 831

Listing Details

Listing Office Maui Property LLC



Listings provided courtesy of the REALTORS® Association of Maui. IDX information is provided exclusively for consumers' personal, non-commercial use and may not be used for any purpose other than to identify prospective properties consumers may be interested in purchasing.