

\$407,000 - 1063 Lower Main St 210, Wailuku

MLS® #398028

\$407,000

2 Bedroom, 1.50 Bathroom, 757 sqft

Residential on 3.00 Acres

Puuone Towers and Plaza, Wailuku, HI

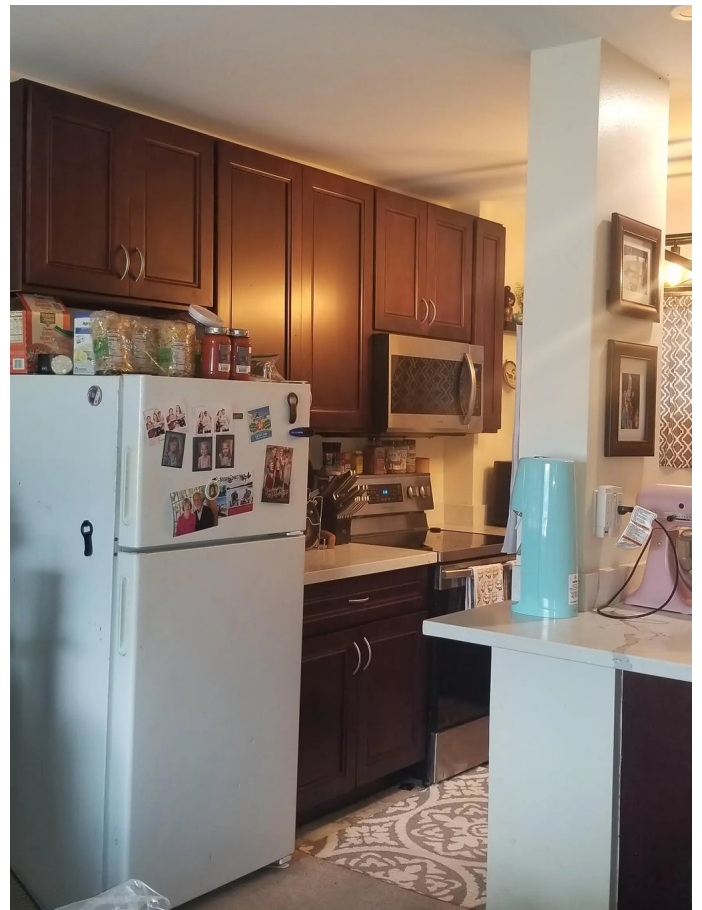
Come see the beautiful 757 square foot 2-bedroom 1.5 bath, 2nd floor unit. This unit has a newly remolded kitchen, stone counter tops, stainless steel flat top stove, microwave, ceiling fans, mirror closet doors, washer/dryer, pet friendly, swimming pool, 2 elevators, 1 designated parking stall #20 with extra stalls to park. The Maintenance fee is \$637.97 per month, includes water, trash, and use of the common areas. AOA Puuone Towers manages the building. Close to restaurants, shopping, banks, hospitals, beaches and bus line. Easy to show.

Essential Information

MLS® #	398028
Price	\$407,000
Bedrooms	2
Bathrooms	1.50
Square Footage	757
Land Tenure	Fee Simple
Acres	3.00
Type	Residential
Sub-Type	Condominium
Style	High-Rise 4+ Stories
Status	Closed
Sold Price	\$407,000

Community Information

Address 1063 Lower Main St 210



Area	Wailuku
Subdivision	Puuone Towers and Plaza
City	Wailuku
State	HI
Zip Code	96793
Condo Name	Puuone Towers and Plaza

Amenities

View	Mountain/Ocean
Waterfront	None
Has Pool	Yes
Pool	In Ground
Vacation Rental	No
Pets Allowed	Yes

Interior

Appliances	Range, Refrigerator
------------	---------------------

Exterior

Roof	Asphalt/Comp Shingle
Foundation	Slab

Additional Information

Date Listed	February 1st, 2023
Days on Market	125
Zoning	Community Bus
HOA Fees Freq.	Monthly
Monthly Maintenance Fee	\$638

Listing Details

Listing Office	HomeSmart Island Homes
----------------	------------------------

Listings provided courtesy of the REALTORS® Association of Maui. IDX information is provided exclusively for consumers' personal, non-commercial use and may not be used for any purpose other than to identify prospective properties consumers may be interested in purchasing.