

\$329,000 - 1063 Lower Main St 617, Wailuku

MLS® #397777

\$329,000

2 Bedroom, 1.50 Bathroom, 757 sqft

Residential on 3.00 Acres

Puuone Towers and Plaza, Wailuku, HI

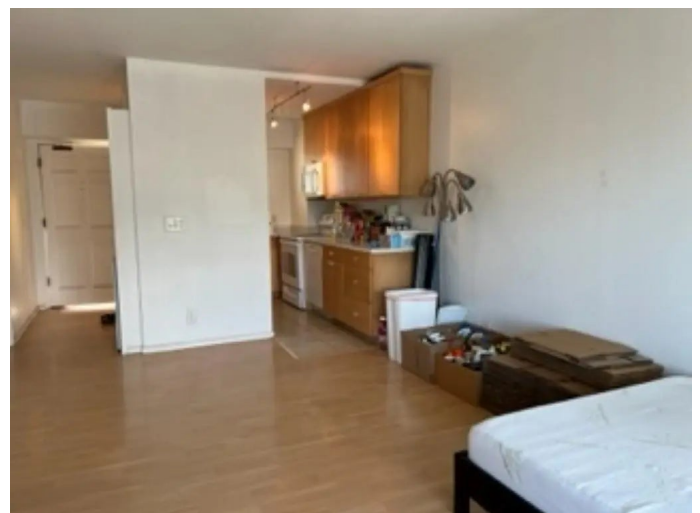
Upgraded and well maintained over the years. Nice views from lanai including the mountains and ocean. End unit so very little traffic. Secured elevator lobby, Pool and on site resident manager. 1 assigned parking stall. Puuone Towers is centrally located in Wailuku on Lower Main Street. Contact your favorite Realtor to arrange a showing.

Essential Information

MLS® #	397777
Price	\$329,000
Bedrooms	2
Bathrooms	1.50
Square Footage	757
Land Tenure	Fee Simple
Acres	3.00
Type	Residential
Sub-Type	Condominium
Status	Closed
Sold Price	\$329,000

Community Information

Address	1063 Lower Main St 617
Area	Wailuku
Subdivision	Puuone Towers and Plaza
City	Wailuku
State	HI
Zip Code	96793



Condo Name Puuone Towers and Plaza

Amenities

View Other
Waterfront None
Has Pool Yes
Pool In Ground
Vacation Rental No

Interior

Interior Features Bookcases
Appliances Disposal, Dryer, Range, Refrigerator, Washer

Exterior

Windows Drapes

Additional Information

Date Listed January 2nd, 2023
Days on Market 30
Monthly Maintenance Fee \$686

Listing Details

Listing Office Aloha Maui Real Estate LLC

Listings provided courtesy of the REALTORS® Association of Maui. IDX information is provided exclusively for consumers' personal, non-commercial use and may not be used for any purpose other than to identify prospective properties consumers may be interested in purchasing.