

\$950,000 - 1993 S Kihei Rd 600, Kihei

MLS® #406482

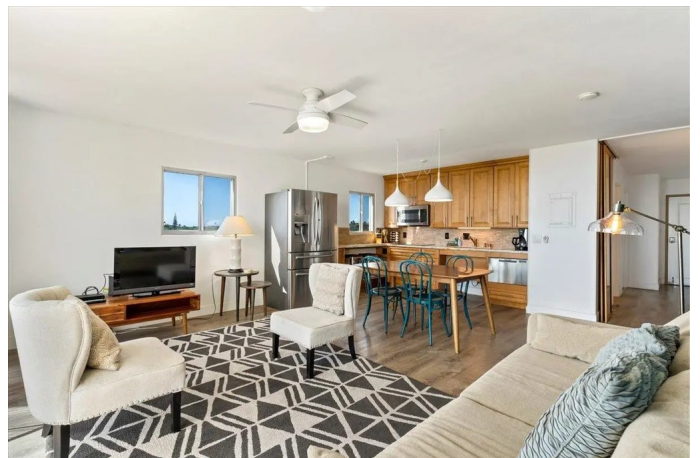
\$950,000

2 Bedroom, 2.00 Bathroom, 921 sqft

Residential on 1.55 Acres

Central Kihei, Kihei, HI

Welcome to Paradise Living in the Heart of South Maui! This beautifully upgraded 2-bedroom, 2-bathroom corner unit is a rare opportunity that combines modern comfort, unbeatable location, and exceptional vacation rental income potential. Perfectly positioned just steps from the stunning Cove Beach and Kalama Beach Park, this property offers the ultimate island lifestyle. Inside, you'll find stylish tile and vinyl flooring throughout, creating a clean and cohesive flow. The flexible lock-off design allows you to rent each bedroom separately—ideal for maximizing your ROI. One side includes an ADA-compliant bathroom with a widened doorway, grab bars, and accessible fixtures, making this unit more inclusive and appealing to a broader range of guests. Enjoy a tastefully remodeled interior with a light, modern aesthetic and an open-concept layout that feels spacious and inviting. Split AC systems and ceiling fans in every room keep things cool and comfortable year-round. A full-size washer and dryer add convenience, while thoughtful finishes ensure a move-in or rent-ready experience from day one. Outside, the complex offers a newly renovated pool and BBQ area, perfect for sunny afternoons and sunset cookouts. A dedicated parking lot and ample street parking provide ease for both you and your guests. What makes this location truly unbeatable? The complex is home to a mix of local eateries, shops, and convenience stores—everything you need is right



downstairs. And when the day winds down, retreat to your private covered lanai to enjoy vibrant sunsets and seasonal whale watching in the winter months. Whether youâ€™re seeking a part-time getaway, a full-time residence, or a high-performing investment, this unit checks every box. ?? Schedule your private showing today and discover why this gem is one of South Kiheiâ€™s best-kept secrets. Paradiseâ€”and profitâ€”awaits!

Built in 1973

Essential Information

MLS® #	406482
Price	\$950,000
Bedrooms	2
Bathrooms	2.00
Square Footage	921
Land Tenure	Fee Simple
Acres	1.55
Year Built	1973
Type	Residential
Sub-Type	Condominium
Style	High-Rise 4+ Stories
Status	Active

Community Information

Address	1993 S Kihei Rd 600
Area	Kihei
Subdivision	Central Kihei
City	Kihei
State	HI
Zip Code	96753
Condo Name	Island Surf

Amenities

View	Mountain/Ocean
Waterfront	Across Street from Ocean

Has Pool	Yes
Pool	In Ground
Vacation Rental	Yes

Interior

Interior Features	Ceiling Fan(s), Chandelier, Furnished, Kitchen Ware
Appliances	Dishwasher, Disposal, Dryer, Microwave, Range, Refrigerator, Washer

Exterior

Exterior Features	Barbecue
Windows	Blinds, Drapes
Foundation	Slab

Additional Information

Date Listed	July 8th, 2025
Zoning	Community Bus
HOA Fees Freq.	Monthly
Monthly Maintenance Fee	\$1,300

Listing Details

Listing Office	Keller Williams Realty Maui-Ki
----------------	--------------------------------

Listings provided courtesy of the REALTORS® Association of Maui. IDX information is provided exclusively for consumers' personal, non-commercial use and may not be used for any purpose other than to identify prospective properties consumers may be interested in purchasing.