

\$605,000 - 119 Hoowaiwai Loop 906, Wailuku

MLS® #406446

\$605,000

2 Bedroom, 1.50 Bathroom, 754 sqft

Residential on 12.25 Acres

Hoolea Terrace at Kehalan, Wailuku, HI

Welcome to Hoolea Terrace #906 – a clean and well-kept 2-bedroom, 1.5-bath upstairs unit in the heart of Wailuku. Enjoy an open living space filled with natural light, cool breezes, and peaceful mountain views from your living room. This unit includes two parking stalls, in-unit laundry, and is part of the pet-friendly Kehalani community, conveniently located near schools, parks, and shopping. A great opportunity for first-time homebuyers, investors, or anyone seeking a low-maintenance lifestyle in Central Maui.

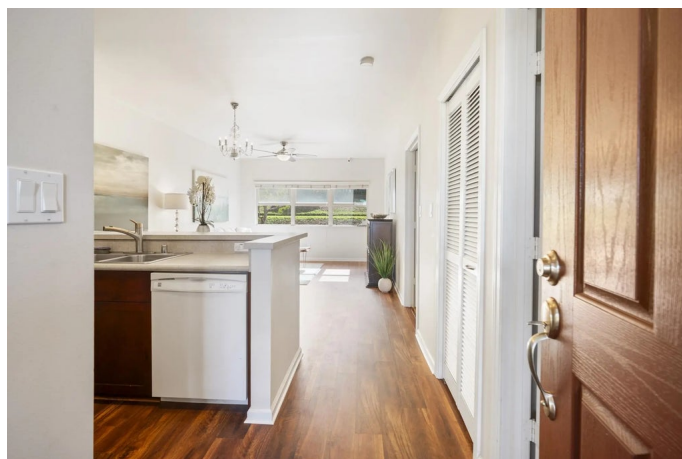
Built in 2013

Essential Information

MLS® #	406446
Price	\$605,000
Bedrooms	2
Bathrooms	1.50
Square Footage	754
Land Tenure	Fee Simple
Acres	12.25
Year Built	2013
Type	Residential
Sub-Type	Condominium
Style	Cluster, Low-Rise 1-3 Stories
Status	Active

Community Information

Address 119 Hoowaiwai Loop 906



Area	Wailuku
Subdivision	Hoolea Terrace at Kehalan
City	Wailuku
State	HI
Zip Code	96793
Condo Name	Hoolea Terrace at Kehalani

Amenities

Utilities	Phone Connected, Cable Connected
View	Mountain(s)
Waterfront	None
Vacation Rental	No
Pets Allowed	Yes

Interior

Interior Features	Ceiling Fan(s), Chandelier, TV Cable
Appliances	Dishwasher, Disposal, Dryer, Microwave, Range, Refrigerator, Washer

Exterior

Windows	Blinds
Roof	Asphalt/Comp Shingle
Foundation	Slab

Additional Information

Date Listed	July 3rd, 2025
Days on Market	82
Zoning	Planned Development
HOA Fees	91
HOA Fees Freq.	Monthly
Monthly Maintenance Fee	\$553

Listing Details

Listing Office	Island Sotheby's Int'l Rlty(M)
----------------	--------------------------------

Listings provided courtesy of the REALTORS® Association of Maui. IDX information is provided exclusively for consumers' personal, non-commercial use and may not be used for any purpose other than to identify prospective properties consumers may be interested in purchasing.