

# \$4,950,000 - 1600 Lower Nahiku Rd, Hana

MLS® #406329

**\$4,950,000**

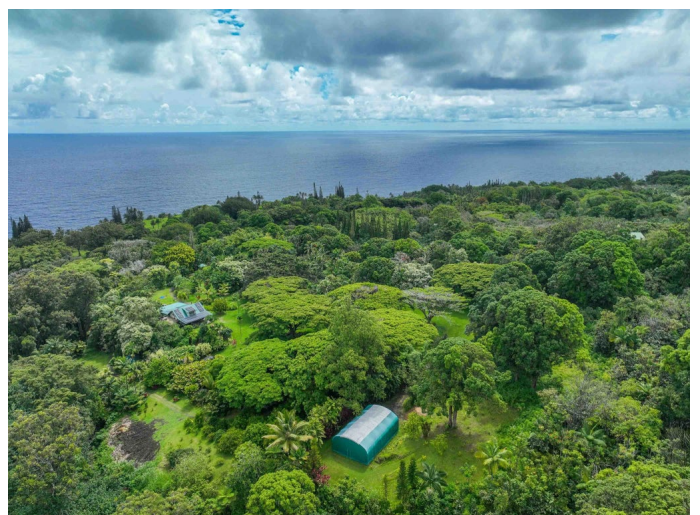
4 Bedroom, 4.00 Bathroom, 3,200 sqft

Residential on 14.90 Acres

N/A, Hana, HI

Self Sustaining Tropical Estate and Cacao Farm - Potential for Seller Financing - Nestled between two river streams on Maui's serene east end, this extraordinary 14.9-acre tropical estate and working farm offers a rare chance to embrace an off-the-grid lifestyle in true paradise. Designed for self-sustainability at its finest, this unique gentleman's and ladies' farm features a deep water well providing pristine drinking water, a powerful state-of-the-art solar energy system, modern septic systems, and acres of mature, fruit-bearing cacao trees. The land is also rich with juicy tropical fruits and vibrant flowering plants. Currently home to approximately 600 cacao trees, the property has the potential to expand up to 11,500 trees. Additionally, an adjacent 180 acres may be available, supporting up to 180,000 more trees. As global cacao production declines and chocolate prices soar, Hawaii is emerging as a prime location for cacao cultivation—making this a timely and strategic investment. Located just 600 feet from the ocean, the estate is exceptionally private and peaceful, with lush botanical surroundings, sweeping ocean views, and three separate access points. Bordered by streams and wrapped in natural beauty, this tropical sanctuary offers unparalleled tranquility, sustainability, and the luxury of living in harmony with nature.

Built in 2021



## Essential Information

MLS® #	406329
Price	\$4,950,000
Bedrooms	4
Bathrooms	4.00
Square Footage	3,200
Land Tenure	Fee Simple
Acres	14.90
Year Built	2021
Type	Residential
Sub-Type	SF w/Det Ohana or Cottage
Status	Active

## Community Information

Address	1600 Lower Nahiku Rd
Area	Hana
Subdivision	N/A
City	Hana
State	HI
Zip Code	96713

## Amenities

View	Mountain/Ocean
Waterfront	None
Vacation Rental	No

## Interior

Interior Features	Ceiling Fan(s), Storage, Workshop
Appliances	Dishwasher, Dryer, Range, Refrigerator, Washer
Fireplace	Yes

## Exterior

Roof	Aluminum/Steel, Asphalt/Comp Shingle
Foundation	Slab, Pillar/Post/Pier

## Additional Information

Date Listed	June 23rd, 2025
Days on Market	87

## Listing Details

Listing Office

Coldwell Banker Island Prop(S)

Listings provided courtesy of the REALTORS® Association of Maui. IDX information is provided exclusively for consumers' personal, non-commercial use and may not be used for any purpose other than to identify prospective properties consumers may be interested in purchasing.