

# \$1,899,000 - 3200 Wailea Alanui Dr 1606, Wailea/Makena

MLS® #406308

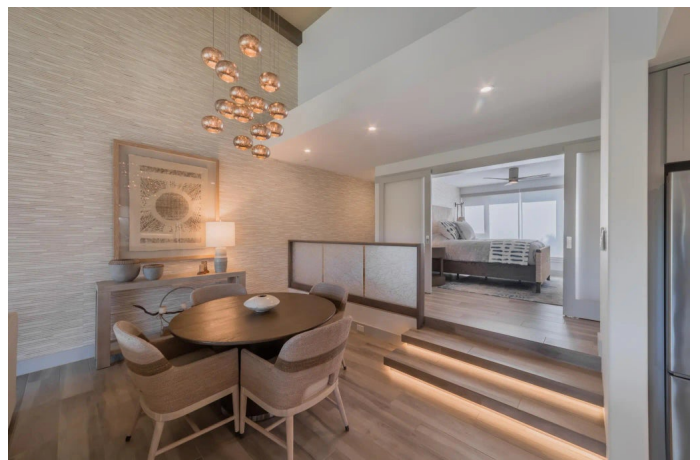
**\$1,899,000**

2 Bedroom, 2.00 Bathroom, 1,299 sqft

Residential on 16.73 Acres

Palms at Wailea, Wailea/Makena, HI

This beautifully transformed two-bedroom, two-bath villa at the Palms at Wailea is a standout property that blends island elegance with exceptional quality. From the moment you step inside, the meticulous attention to detail and craftsmanship are immediately clear—every finish thoughtfully selected to create a refined, yet inviting retreat. The soaring vaulted ceilings, finished with a subtle textured design, create an immediate feeling of spaciousness and lightness. Oversized windows flood the interior with natural light, highlighting the clean architectural lines and carefully chosen materials throughout. The kitchen is equipped with solid surface granite countertops, KitchenAid appliances, and durable ceramic tile plank flooring throughout. Thoughtful details like custom resin panel doors with embedded organic elements, textured linen accent walls, and smooth level five paint finishes add both sophistication and warmth. As evening falls, underlit lighting artfully placed throughout the villa casts a soft, inviting glow, enhancing the serene, resort-inspired ambiance. The bathrooms have been fully transformed to offer a spa-like retreat, showcasing elegant finishes and a tranquil design that elevates everyday living. The spacious lanai opens seamlessly to beautifully landscaped grounds, framed by oversized tropical trees and lush greenery. It’s an ideal space for entertaining or simply unwinding while enjoying the gorgeous ocean views and tranquil ambiance that



surround you. Ideally positioned within one of Wailea’s most sought-after communities, this unit enjoys expansive views of lush tropical greenery and a beautiful glimpse of the ocean—a tranquil setting that feels like a true getaway. The Palms at Wailea offers a resort-style experience, with amenities that include an oversized pool and spa, a peaceful pavilion with concierge services, and shaded lounge areas perfect for gathering or relaxing. Just a short stroll from Wailea’s world-class Wailea/South side beaches, golf, and the Shops at Wailea, this villa is ideally suited for full-time living, a second home, or an upscale vacation rental. Thoughtfully transformed and masterfully styled, this is Maui living at its most refined.

Built in 1992

**Essential Information**

MLS® #	406308
Price	\$1,899,000
Bedrooms	2
Bathrooms	2.00
Square Footage	1,299
Land Tenure	Fee Simple
Acres	16.73
Year Built	1992
Type	Residential
Sub-Type	Condominium
Style	Townhouse
Status	Active

**Community Information**

Address	3200 Wailea Alanui Dr 1606
Area	Wailea/Makena
Subdivision	Palms at Wailea
City	Wailea/Makena
State	HI

Zip Code	96753
Condo Name	Palms at Wailea I

### **Amenities**

Utilities	Cable Connected
View	Ocean
Waterfront	None
Has Pool	Yes
Pool	In Ground
Vacation Rental	Yes

### **Interior**

Interior Features	Ceiling Fan(s), Chandelier, TV Cable
Appliances	Dishwasher, Disposal, Dryer, Microwave, Range, Refrigerator, Washer

### **Exterior**

Exterior Features	Barbecue
Windows	Blinds, Drapes
Roof	Monier Tile/Tile
Foundation	Slab

### **Additional Information**

Date Listed	June 20th, 2025
Days on Market	92
Zoning	Apartment District,A-2 Apartment District
HOA Fees Freq.	Monthly
Monthly Maintenance Fee	\$1,512

### **Listing Details**

Listing Office	Maui Luxury Real Estate LLC
----------------	-----------------------------

Listings provided courtesy of the REALTORS® Association of Maui. IDX information is provided exclusively for consumers' personal, non-commercial use and may not be used for any purpose other than to identify prospective properties consumers may be interested in purchasing.