

\$888,000 - 4401 Lower Honoapiilani Rd B501, Napili/Kahana/Honokowai

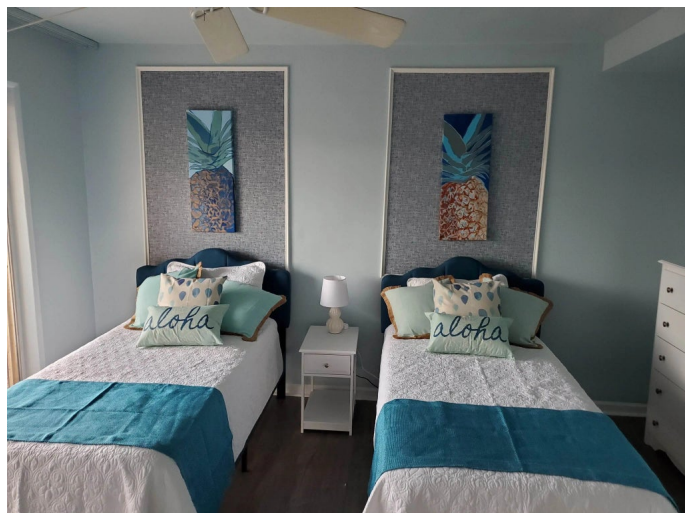
MLS® #405348

\$888,000

2 Bedroom, 2.00 Bathroom, 1,066 sqft
Residential on 1.43 Acres

N/A, Napili/Kahana/Honokowai, HI

HOA covers all your utilities. Imagine waking up to the gentle sound of waves and the breathtaking sight of Molokai across the sparkling blue waters. Now is your chance to own a beautifully remodeled fifth-floor condo at the Hololani Resort, where comfort meets island elegance. Step inside and be greeted by an open and airy living space, thoughtfully designed with fresh coastal décor and new furnishings. The well-equipped kitchen boasts refinished cabinetry, sleek stainless steel appliances, and everything you need to prepare a meal with a view. Sliding Shoji screens allow you to seamlessly connect the main bedroom to the living area, while a Murphy bed adds versatility for guests. Step out onto your private balcony and enjoy mesmerizing northwest-facing views, perfect for watching the seasonal migration of humpback whales. An additional balcony extends from the guest room, providing another peaceful retreat. Hololani Resort offers oceanfront amenities, including a pool, BBQ area, and an inviting ohana room. Convenience is key, with underground parking, extra storage, and pet-friendly policies. Whether you're looking for a full-time residence, a second home, or a lucrative short-term rental, this fee-simple condo is a rare find. Sold fully furnished and turnkey, it was tastefully remodeled in 2021. Contact your agent today to learn more about the current



seawall assessment and secure your piece of paradise.

Built in 1974

Essential Information

| | |
|----------------|-------------|
| MLS® # | 405348 |
| Price | \$888,000 |
| Bedrooms | 2 |
| Bathrooms | 2.00 |
| Square Footage | 1,066 |
| Land Tenure | Fee Simple |
| Acres | 1.43 |
| Year Built | 1974 |
| Type | Residential |
| Sub-Type | Condominium |
| Status | Active |

Community Information

| | |
|-------------|---------------------------------|
| Address | 4401 Lower Honoapiilani Rd B501 |
| Area | Napili/Kahana/Honokowai |
| Subdivision | N/A |
| City | Napili/Kahana/Honokowai |
| State | HI |
| Zip Code | 96761 |
| Condo Name | Hololani |

Amenities

| | |
|-----------------|----------------------------------|
| Utilities | Sewer Connected, Cable Connected |
| View | Ocean |
| Is Waterfront | Yes |
| Waterfront | Ocean Front |
| Has Pool | Yes |
| Pool | In Ground |
| Vacation Rental | Yes |

Interior

| | |
|-------------------|--------------------------------|
| Interior Features | Ceiling Fan(s) |
| Appliances | Microwave, Range, Refrigerator |

Exterior

Windows Drapes

Additional Information

Date Listed March 21st, 2025

Days on Market 195

HOA Fees Freq. Monthly

Monthly Maintenance Fee \$2,464

Listing Details

Listing Office Jeffrey Samuels Realty

Listings provided courtesy of the REALTORS® Association of Maui. IDX information is provided exclusively for consumers' personal, non-commercial use and may not be used for any purpose other than to identify prospective properties consumers may be interested in purchasing.