

\$835,000 - 155 Wailea Ike PI 135, Wailea/Makena

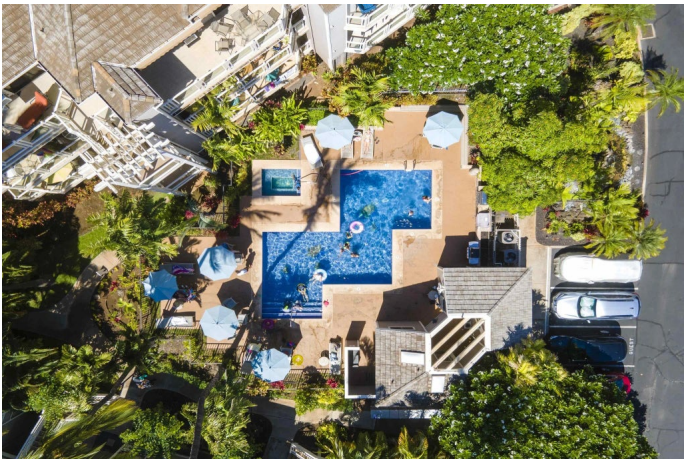
MLS® #404371

\$835,000

1 Bedroom, 2.00 Bathroom, 908 sqft
Residential on 12.22 Acres

Grand Champions, Wailea/Makena, HI

Discover an incredible opportunity to own a piece of paradise in Wailea, Maui’s premier 1,500-acre resort community known for its luxurious beaches, world-renowned golf courses, and vibrant attractions. Grand Champions Villas Unit #135, a 1-bedroom, 2-bath ground-floor condo, is set to be the perfect entry point into this prestigious market. This unit is more than just a home; it’s a gateway to the lifestyle Wailea is famous for. With its five crescent-shaped beaches, upscale shopping, award-winning restaurants, and access to world-class resorts, Wailea offers the ultimate in tropical luxury. Whether you’re looking for a relaxing getaway or an active lifestyle filled with golf, water sports, and exploration, this community has it all. Currently, an income-producing property, Unit #135 is a short-term rental with plenty of potential to elevate its performance. This is your chance to secure a foothold in one of Maui’s most sought-after locations. Don’t miss the opportunity to own a condo in Wailea at such an attractive price point.



Built in 1989

Essential Information

MLS® #	404371
Price	\$835,000
Bedrooms	1
Bathrooms	2.00

Square Footage	908
Land Tenure	Fee Simple
Acres	12.22
Year Built	1989
Type	Residential
Sub-Type	Condominium
Style	Low-Rise 1-3 Stories
Status	Active

Community Information

Address	155 Wailea Ike Pl 135
Area	Wailea/Makena
Subdivision	Grand Champions
City	Wailea/Makena
State	HI
Zip Code	96753
Condo Name	Grand Champions

Amenities

Utilities	Phone Connected, Cable Connected
View	Garden
Waterfront	None
Has Pool	Yes
Pool	In Ground
Vacation Rental	Yes

Interior

Interior Features	Bookcases, Ceiling Fan(s), Chandelier, Furnished, Inventory, Kitchen Ware, Linens, TV Cable
Appliances	Dishwasher, Disposal, Dryer, Microwave, Range, Refrigerator, Washer

Exterior

Windows	Blinds, Drapes
Roof	Monier Tile/Tile
Foundation	Pillar/Post/Pier

Additional Information

Date Listed	December 17th, 2024
Days on Market	255

Zoning	Apartment District
HOA Fees	222
HOA Fees Freq.	Semi-Annually
Monthly Maintenance Fee	\$855

Listing Details

Listing Office	Island Sotheby's Int'l Rlty(M)
----------------	--------------------------------

Listings provided courtesy of the REALTORS® Association of Maui. IDX information is provided exclusively for consumers' personal, non-commercial use and may not be used for any purpose other than to identify prospective properties consumers may be interested in purchasing.