

\$5,700,000 - 104 Woodrose Pl, Kapalua

MLS® #403822

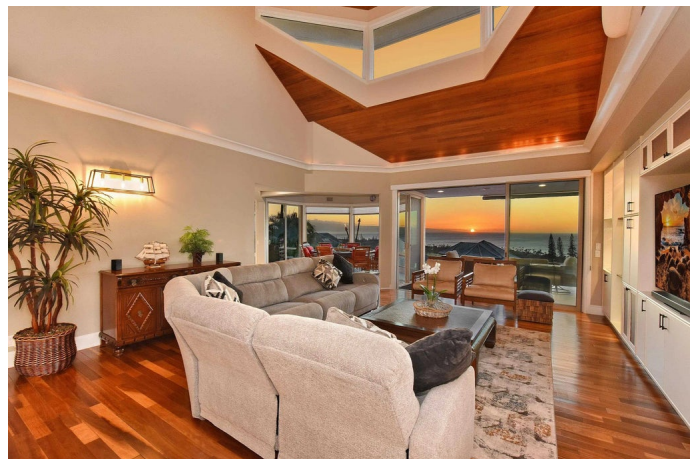
\$5,700,000

4 Bedroom, 3.50 Bathroom, 3,315 sqft

Residential on 0.23 Acres

Pineapple Hill, Kapalua, HI

Upon entering this magnificent 3,315 sq. ft. home you will be mesmerized by its spectacular panoramic due west views of the Pacific Ocean between Lana'i and Moloka'i offering colorful year-round sunsets. A remodeled masterpiece featuring vaulted cedar ceilings, Italian marble and eucalyptus wood floors, quartz countertops and sapele cabinets, just to name a few of the recent refinements of this tastefully furnished home. This most popular floorplan offers all 4 bedrooms, 3 1/2 bathrooms, living room, kitchen, outdoor living area and pool on the main level. The added bonus of an upstairs loft offers many use options, currently set up as an office/sitting area to enjoy the ocean views from the high dormer windows. A beautiful infinity edge pool with Baja steps and spa was just completed, with the entire house and pool equipment are supported by 52 solar panels and 2 Tesla batteries. This home is perched on a quiet cul-de-sac at the crest of Pineapple Hill, a highly desirable gated subdivision which offers residents a very large community/lap pool, tennis & pickleball courts, a pavilion / entertainment area, catering kitchen and barbecues. Pineapple Hill itself is located inside the 1,650-acre resort area of Kapalua's famed 23,000-acre plantation. Kapalua offers more than 100 miles of hiking trails, duck pond, bike trails, tennis center, two world famous golf courses, two five-star hotels plus five-star Montage Spa and numerous fine dining restaurants, all accessible via



complimentary resort-wide shuttles. 104 Woodrose Place is a must-see home in impeccable condition, it looks and shows as if it were built yesterday.

Built in 1989

Essential Information

MLS® #	403822
Price	\$5,700,000
Bedrooms	4
Bathrooms	3.50
Square Footage	3,315
Land Tenure	Fee Simple
Acres	0.23
Year Built	1989
Type	Residential
Sub-Type	Single Family Residence
Status	Active

Community Information

Address	104 Woodrose Pl
Area	Kapalua
Subdivision	Pineapple Hill
City	Kapalua
State	HI
Zip Code	96761

Amenities

Utilities	Phone Connected, Cable Connected
Parking	Garage, Garage Door Opener
# of Garages	2
View	Ocean
Waterfront	None
Has Pool	Yes
Pool	In Ground, Heated
Vacation Rental	No

Interior

Interior Features	Ceiling Fan(s), Furnished, TV Cable, Remodeled
Appliances	Dishwasher, Disposal, Dryer, Microwave, Range, Refrigerator, Washer
Cooling	Central Air
Stories	Two

Exterior

Exterior Features	Tennis Court(s), Lawn Sprinkler
Lot Description	Level
Windows	Blinds, Drapes
Roof	Monier Tile/Tile
Foundation	Slab

Additional Information

Date Listed	October 23rd, 2024
Days on Market	252
Zoning	Residential
HOA Fees	1000
HOA Fees Freq.	Monthly

Listing Details

Listing Office	Keller Williams Realty Maui-L
----------------	-------------------------------

Listings provided courtesy of the REALTORS® Association of Maui. IDX information is provided exclusively for consumers' personal, non-commercial use and may not be used for any purpose other than to identify prospective properties consumers may be interested in purchasing.