

\$23,000,000 - 5515 Weke Rd, Hanalei

MLS® #724076

\$23,000,000

3 Bedroom, 5.00 Bathroom, 3,550 sqft

Residential on 0.22 Acres

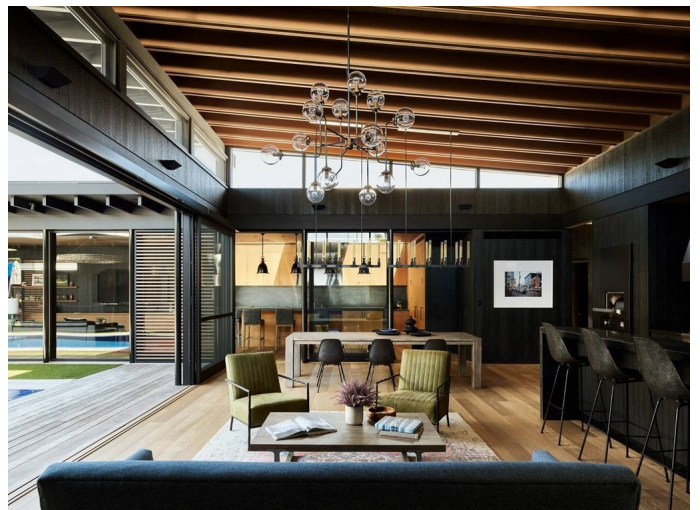
HANALEI, Hanalei, HI

Wahi Lani, meaning 'heavenly place' in Hawaiian, embodies the essence of style meeting function in Hanalei Bay. This newly built residence, steps away from the bay's white sands, is a surfer's sanctuary designed for seamless access to surfing and other outdoor activities, offering an ideal blend of life and leisure. Wahi Lani showcases architectural expertise, with its U-shaped design and lanai, which connect seamlessly to the outdoors. The residence's heart is its central courtyard, framed by walls treated with Shou Sugi Ban, a traditional Japanese technique that imparts a lava-inspired texture with a rich charcoal hue. Situated in Hanalei, Wahi Lani is more than a dwelling; it's a gateway to a lifestyle immersed in natural splendor and style. Its proximity to Hanalei Town, blending seclusion with social engagement, offers a balance of serene living and exciting outdoor activities. Surrounded by natural wonders, as well as the amenities provided by nearby Princeville and the One Hotel at Hanalei Bay, Wahi Lani is a sanctuary for those who appreciate this balance.

Built in 2021

Essential Information

MLS® #	724076
Price	\$23,000,000
Bedrooms	3



Bathrooms	5.00
Full Baths	3
Half Baths	2
Square Footage	3,550
Acres	0.22
Year Built	2021
Type	Residential
Sub-Type	Single Family Residence
Status	Active

Community Information

Address	5515 Weke Rd
Subdivision	HANALEI
City	Hanalei
State	HI
Zip Code	96714

Amenities

Parking	Covered, Other
View	Mountain(s), Waterfall
Has Pool	Yes

Interior

Appliances	Dishwasher, Freezer, Gas Cooktop, Other, Range, Range Hood, Refrigerator
Cooling	Air Conditioning

Additional Information

Date Listed	September 17th, 2025
Days on Market	26
Zoning	R-4

Listing Details

Listing Office	Hawaii Life
----------------	-------------

IDX is deemed reliable but is not guaranteed accurate by the Hawaii Information Service, Inc. Listing Service. © 2025 Hawaii Information Service. All Rights Reserved.

Listing information last updated on October 13th, 2025 at 9:34am HST