

\$2,700,000 - 5-2841 Kuhio Hwy A, Kilauea

MLS® #724037

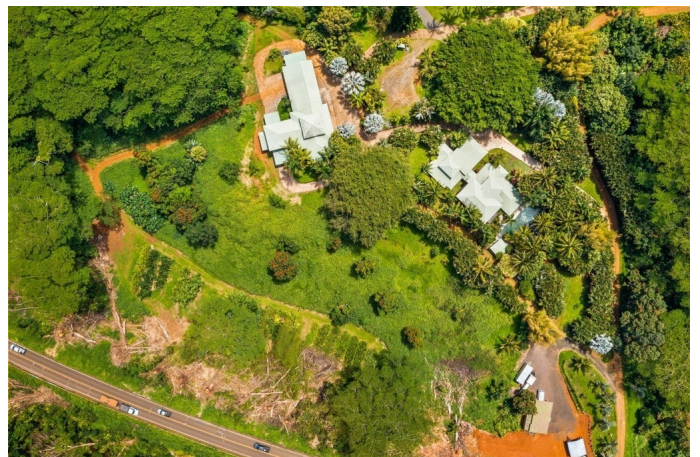
\$2,700,000

3 Bedroom, 5.00 Bathroom, 4,875 sqft

Residential on 11.72 Acres

KALIHIWAI RIDGE, Kilauea, HI

Eleven + acres of North Shore splendor on Kauaï™. Privacy abounds at this estate comprised of over 4,000 square feet of luxurious living with resort amenities close to Kilauea-town. County records show over 7,000 square feet of building space. The ultra-dazzling resort style grotto includes a saltwater pool and spa complete with rock waterfall. Tropical charm oozes with designer tile art, a custom Tiki bar, barbeque area, all surrounded with specimen tropical plantings. Property is bordered by the Puukumu Stream and features many mature specimen palm trees. Fruit trees abound as well. A very cool, up-to-date, modern barn complete with all amenities as well as a game room and bath. The entire property is well designed with concrete driveways connecting the structures, extensive lava rock walls, and steel roofing. A must see is the glass front entry door by famed artist, Marc Daniels of Hanalei. Added features are custom bamboo flooring with artistically inserted stone. There are beautiful granite counter tops, large tankless on-demand propane water heating. A must-see North Shore experience! Photos are 4 years old.



Built in 1994

Essential Information

MLS® #

724037

Price	\$2,700,000
Bedrooms	3
Bathrooms	5.00
Full Baths	5
Square Footage	4,875
Acres	11.72
Year Built	1994
Type	Residential
Sub-Type	Single Family Residence
Status	Active Under Contract

Community Information

Address	5-2841 Kuhio Hwy A
Subdivision	KALIHIWAI RIDGE
City	Kilauea
State	HI
Zip Code	96754
Condo Name	LUNALILO CONDOMINIUM

Amenities

Parking	Attached
Has Pool	Yes

Interior

Appliances	Dishwasher, Disposal, Dryer, Range, Range Hood, Refrigerator, Washer
------------	--

Additional Information

Date Listed	September 10th, 2025
Days on Market	33
Zoning	A
HOA Fees	150
HOA Fees Freq.	Monthly

Listing Details

Listing Office	Aloha Sotheby's Intl Realty - Kaua'i
----------------	--------------------------------------

IDX is deemed reliable but is not guaranteed accurate by the Hawaii Information Service, Inc. Listing Service. © 2025 Hawaii Information Service. All Rights Reserved.

Listing information last updated on October 13th, 2025 at 7:19am HST