

\$3,999,000 - 3661 Papalina Rd A, Kalaheo

MLS® #720478

\$3,999,000

4 Bedroom, 4.00 Bathroom, 2,906 sqft
Residential on 1.47 Acres

N/A, Kalaheo, HI

Contemporary Kalaheo Plantation-Style
Luxury Estate with Ocean Views. Conveniently
located in a private enclave, this luxury estate
offers breathtaking sunrises and sunsets.

Enjoy the amazing ocean & mountain views,
full moons and nighttime opportunities for
spectacular stargazing.

Upon arrival,
the Porte CochÃre provides shade for you &
your guests allowing effortless transition into
the main entry. The single-level floorplan
benefits ease in routine mobility and everyday
living.

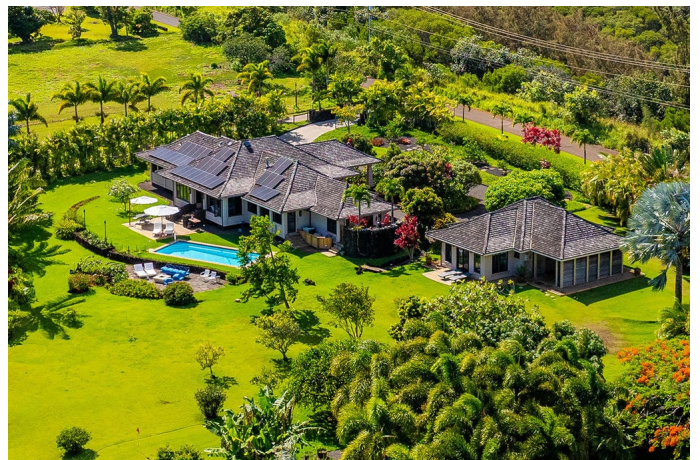
Designed by renowned Kauai
architect, Ginny Latham, this timeless home
aligns elegance with comfort for todayâ€™s
work-from-anywhere lifestyle.

Set on
1.5 fenced acres, the landscaped residence
includes fruit trees, herb gardens, a 14x30
heated pool, massaging water feature & LED
lighting. The Great Room showcases
mahogany, natural stone finishes, gas
fireplace, chefâ€™s kitchen, Sub Zero fridge,
6-burner gas cooktop, wine fridge, bakerâ€™s
island & walk-in pantry.

Two spacious
air-conditioned primary suites offer
indoor/outdoor lava rock showers, Santos
Mahogany flooring and screened lanais for
that tropical experience. Bedroom 3 currently
offers a state-of-the-art theater, 4K projector,
surround-sound and motorized recliners. The
home office includes built-ins and high-speed
fiber optics.

A detached 2-car garage
includes a finished guest ohana/office with half
bath.

The property features 34 solar
panels and four Tesla Powerwalls for charging



EV vehicles, heating the pool, and maintaining lower electrical costs. Highlights include a Sonos sound system, security system, A/C, gym, executive putting green, BBQ, tiki torches and proximity to Poipu Beach, Kukuilono Golf Course, sight-seeing opportunities, fine dining & premium shopping.

Since 2018, similar area properties have, on average, increased in value 28%.

This refined, sustaining estate offers comforts and features that are best appreciated in person while touring this easy-to-show p

Built in 2005

Essential Information

MLS® #	720478
Price	\$3,999,000
Bedrooms	4
Bathrooms	4.00
Full Baths	4
Square Footage	2,906
Acres	1.47
Year Built	2005
Type	Residential
Sub-Type	Single Family Residence
Status	Active

Community Information

Address	3661 Papalina Rd A
Subdivision	N/A
City	Kalaheo
State	HI
Zip Code	96741
Condo Name	LEI MALA ESTATES

Amenities

Parking	Covered, Other
View	Canyon, Coastline, Forest, Mountain(s), Ocean, Ocean Horizon, Pasture, Sunrise

Has Pool	Yes
----------	-----

Interior

Interior Features	Built-in Features, Central Vacuum, Enclosed Lanai, Floor Drain, High Ceilings, See Remarks
-------------------	--

Appliances	Convection Oven, Dishwasher, Disposal, Dryer, Freezer, Gas Cooktop, Indoor Grill, Microwave, Oven, Range, Range Hood, Refrigerator, Washer, Washer/Dryer Stacked, Wine Cooler
------------	---

Heating	Zoned
---------	-------

Cooling	Air Conditioning, Zoned
---------	-------------------------

Fireplaces	Electric, Gas
------------	---------------

Exterior

Exterior Features	Lighting, See Remarks
-------------------	-----------------------

Lot Description	Cleared, Cul-De-Sac, Grassy, Landscaped, See Remarks
-----------------	--

Windows	Blinds, Shutters
---------	------------------

Construction	Double Wall, Stone, Wood Frame
--------------	--------------------------------

Additional Information

Date Listed	May 19th, 2025
-------------	----------------

Days on Market	146
----------------	-----

Zoning	A
--------	---

Listing Details

Listing Office	Coldwell Banker Island Properties - Kauai
----------------	---

IDX is deemed reliable but is not guaranteed accurate by the Hawaii Information Service, Inc. Listing Service. © 2025 Hawaii Information Service. All Rights Reserved.

Listing information last updated on October 12th, 2025 at 11:34am HST