

# \$980,000 - 3880 Wyllie Rd 8c, Princeville

MLS® #719730

**\$980,000**

3 Bedroom, 2.00 Bathroom, 1,532 sqft  
Condo on 0.00 Acres

PRINCEVILLE, Princeville, HI

Best Priced 3BR / 2BA Condo in Princeville!  
Located in the heart of Puamana at Princeville, this spacious condo offers exceptional value in one of Kauaï's most coveted resort communities. Next Door to Westin Princeville Ocean Resort, short walk to Anini Beach and 10 minute walk to Princeville Community Shopping Center. <br><br>

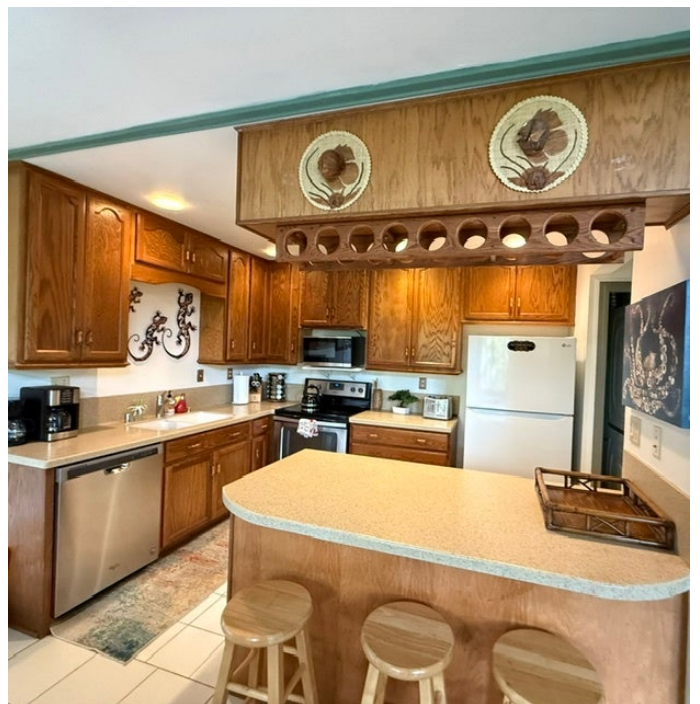
Built in 1979

## Essential Information

MLS® #	719730
Price	\$980,000
Bedrooms	3
Bathrooms	2.00
Full Baths	2
Square Footage	1,532
Acres	0.00
Year Built	1979
Type	Condo
Sub-Type	Condominium
Status	Active

## Community Information

Address	3880 Wyllie Rd 8c
Subdivision	PRINCEVILLE
City	Princeville
State	HI



Zip Code	96722
Condo Name	PUAMANA

### **Amenities**

Parking	Assigned
---------	----------

### **Interior**

Appliances	Dishwasher, Disposal, Microwave, Range, Refrigerator, Washer/Dryer Stacked
------------	--

### **Additional Information**

Date Listed	May 13th, 2025
-------------	----------------

Days on Market	153
----------------	-----

Zoning	R-10
--------	------

HOA Fees	1516.16
----------	---------

HOA Fees Freq.	Monthly
----------------	---------

### **Listing Details**

Listing Office	Coldwell Banker Island Properties - Kauai
----------------	---

IDX is deemed reliable but is not guaranteed accurate by the Hawaii Information Service, Inc. Listing Service. © 2025 Hawaii Information Service. All Rights Reserved.

Listing information last updated on October 13th, 2025 at 9:04am HST