

# \$450,000 - 8d, Kapaa

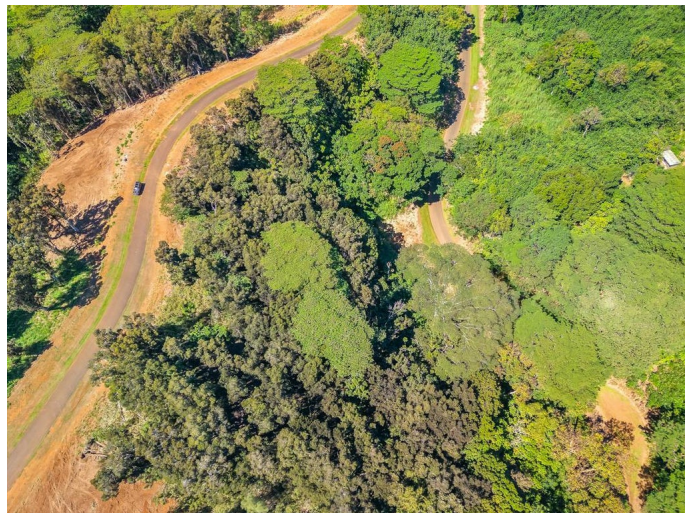
MLS® #704977

**\$450,000**

0 Bedroom, 0.00 Bathroom,  
Land on 1.27 Acres

KULANA SUBDIVISION, Kapaa, HI

While having limited level space we believe you will still be pleasantly surprised by the great charm Unit 8D offers inside the Kulana Subdivision. Depending on your final design one might gain great privacy by the sloping hillside, creating a tranquil retreat.<br><br>As you venture into the lower portion of this unit and clear the way, you could uncover unexpected charm adding character and your tropical escape. This unit invites you to see beyond the initial impression, offering a hidden gem waiting to be revealed and transformed.<br><br>Kulana is the newest AGRICULTURAL CPR community on Kauai. It is a walker, biker, and jogger's paradise with paved roads throughout. Enjoy the community lake and open spaces. Located within a couple of miles of the quaint beach town, Kapaâ€™a with shops and restaurants, and only a few miles from world-famous Kealia Beach.<br><br>Immediately upon ownership, you may apply to the Kulana Design Committee and the County of Kauai for a building permit. Photos with white border lines and any maps shown are for reference only. No warranty is expressed or implied regarding the accuracy of either.



## Essential Information

MLS® #	704977
Price	\$450,000

Bathrooms	0.00
Acres	1.27
Type	Land
Status	Active Under Contract

### **Community Information**

Address	8d
Subdivision	KULANA SUBDIVISION
City	Kapaa
State	HI
Zip Code	96746
Condo Name	KULANA

### **Exterior**

Lot Description	Wooded
-----------------	--------

### **Additional Information**

Date Listed	November 9th, 2023
Days on Market	702
Zoning	A
HOA Fees	500
HOA Fees Freq.	Monthly

### **Listing Details**

Listing Office	Aloha Sotheby's Intl Realty - Kaua'i
----------------	--------------------------------------

IDX is deemed reliable but is not guaranteed accurate by the Hawaii Information Service, Inc. Listing Service. © 2025 Hawaii Information Service. All Rights Reserved.

Listing information last updated on October 11th, 2025 at 4:49pm HST