

\$490,000 - 1b, Kapaa

MLS® #704956

\$490,000

0 Bedroom, 0.00 Bathroom,
Land on 1.92 Acres

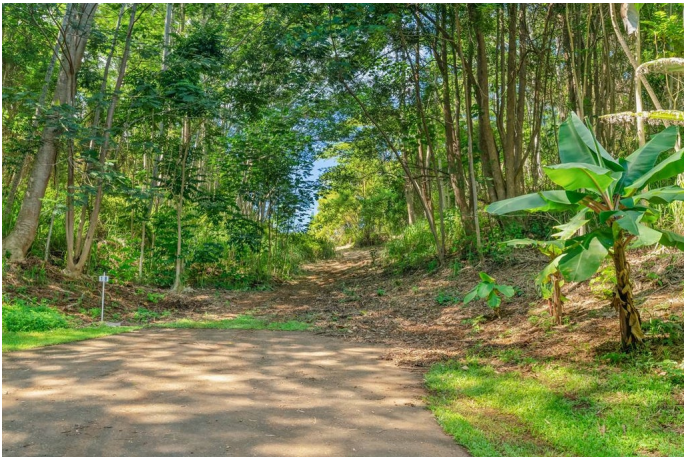
KULANA SUBDIVISION, Kapaa, HI

With hilltop views in the Kulana Subdivision, Unit 1B sloping terrain offers a very commanding building spot looking over a large part of Kulana and views of the surrounding mountains.

Experience tranquility in this secluded and well-positioned unit with nearly . 2 acres to explore.

Kulana is the newest AGRICULTURAL CPR community on Kauai. It is a walker, biker, and jogger's paradise with paved roads throughout. Enjoy the community lake and open spaces. Located within a couple of miles of the quaint beach town, Kapaâ€™a with shops and restaurants, and only a few miles from world-famous Kealia Beach.

Immediately upon ownership, you may apply to the Kulana Design Committee and the County of Kauai for a building permit. Photos with white border lines and any maps shown are for reference only. No warranty is expressed or implied regarding the accuracy of either.



Essential Information

MLS® #	704956
Price	\$490,000
Bathrooms	0.00
Acres	1.92
Type	Land
Status	Active

Community Information

Address	1b
Subdivision	KULANA SUBDIVISION
City	Kapaa
State	HI
Zip Code	96746
Condo Name	KULANA

Exterior

Lot Description	Cul-De-Sac
-----------------	------------

Additional Information

Date Listed	November 9th, 2023
Days on Market	702
Zoning	A
HOA Fees	500
HOA Fees Freq.	Monthly

Listing Details

Listing Office	Aloha Sotheby's International - Kauai
----------------	---------------------------------------

IDX is deemed reliable but is not guaranteed accurate by the Hawaii Information Service, Inc. Listing Service. © 2025 Hawaii Information Service. All Rights Reserved.
Listing information last updated on October 11th, 2025 at 4:49pm HST