

\$749,000 - (unit #2702) 469 Ena Road, Honolulu

MLS® #202523310

\$749,000

2 Bedroom, 2.00 Bathroom, 948 sqft

Residential on 2.60 Acres

WAIKIKI, Honolulu, HI

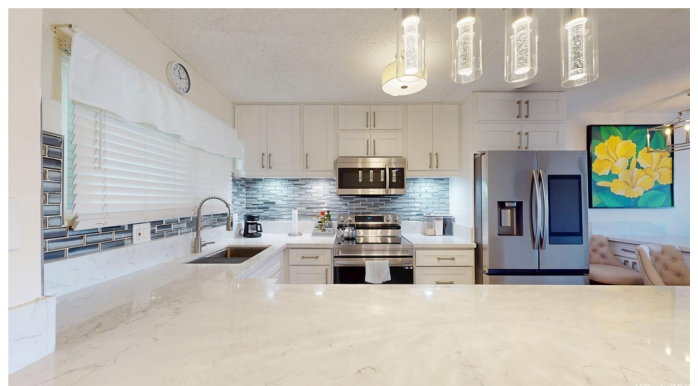
Experience island living at its best in this beautifully updated condo that exudes pride of ownership. Quietly located toward the end of the hall, this unit offers exceptional privacy and minimal foot traffic. Enjoy refreshing mauka breezes that keep the home cool year-round, or rely on the new 18,000 BTU Air Conditioner unit for added comfort. The modern kitchen features stainless steel appliances, upgraded lighting, and sleek finishes. The spacious living area includes a built-in bar counter, perfect for relaxing or entertaining. Step onto your private lanai to take in sweeping views from Diamond Head sunrises to Ewa sunsets. Dual-pane sliders ensure a peaceful retreat. Additional highlights include a brand-new LG washer and dryer, upgraded vanities with soft-close cabinetry, and access to resort-style amenities including a pool, gym, sauna, putting green, and a tennis/pickleball court. Close to world class beaches, dining, shopping & entertainment, this condo combines modern style, comfort, convenience and privacy. This unit comes with 1 assigned parking and ample guest parking. The Waipuna building is well maintained with an on-site building manager Monday through Saturday.

Built in 1971

Essential Information

MLS® # 202523310

Price \$749,000



Bedrooms	2
Bathrooms	2.00
Full Baths	2
Square Footage	948
Acres	2.60
Year Built	1971
Type	Residential
Sub-Type	Condominium
Style	High Rise
Status	Active

Community Information

Address	(unit #2702) 469 Ena Road
Area	Metro
Subdivision	WAIKIKI
City	Honolulu
County	Oahu
State	HI
Zip Code	96815
Condo Name	Waipuna

Amenities

Parking Spaces	1
Parking	Assigned, Garage, Guest, On Street
View	Canal, Coastline, City, Garden, Mountain(s), Ocean, Sunset
Has Pool	Yes

Interior

Interior Features	BedroomOnMainLevel,FullBathOnMainLevel,Storage
Stories	One

Exterior

Exterior	Concrete
----------	----------

Additional Information

Days on Market	1
Lease Fee	\$0
Monthly Maintenance Fee	\$823

Listing Details

Based on information from the Multiple Listing Service of the HiCentral MLS®, Ltd. active listings last updated on October 15th, 2025 at 3:05am HST. Information is deemed reliable but not guaranteed. Copyright: 2025 by the HiCentral MLS®, Ltd. Listing information is provided exclusively for consumers' personal, non-commercial use and may not be used for any purpose other than to identify prospective properties consumers may be interested in purchasing. Some of the active listings appearing on this site may be listed by other REALTORS®. If you are interested in those active listings, our company may represent you as the buyer's agent. If the active listing you are interested in is our company's active listing, you may speak to one of our agents regarding your options for representation.