

# \$400,000 - (unit #2204) 98-402 Koauka Loop, Aiea

MLS® #202522114

**\$400,000**

1 Bedroom, 1.00 Bathroom, 610 sqft

Residential on 5.15 Acres

PEARLRIDGE, Aiea, HI

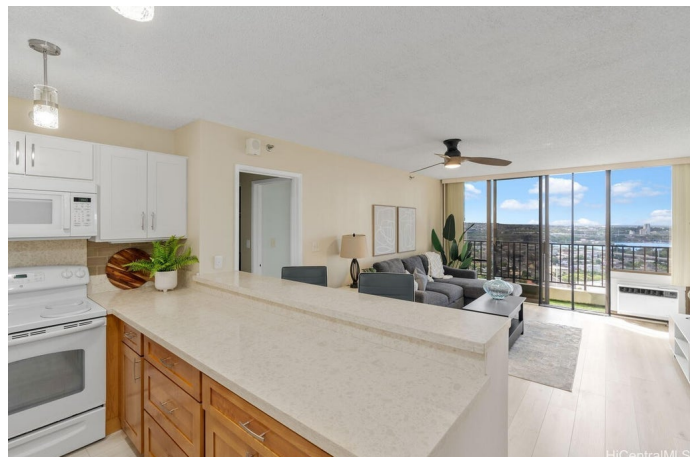
Welcome home to this renovated & furnished high-rise gem in the highly sought-after Pearl Regency building! Perched on the 22nd floor, this bright and airy condo offers panoramic views of Pearl Harbor, a glimpse of Diamond Head in the distance along with gorgeous sunrises & sunsets lighting up the ocean sky. Step inside to discover your recently revamped unit featuring LVP flooring, shaker style cabinets, stone kitchen countertops, new paint throughout & an updated bathroom. Added conveniences include an ultra quiet A/C, ceiling fans, in-unit washer/dryer & more. Centrally located just minutes from Pearl Harbor, Hickam AFB, the airport & major freeway access (H-1, H-2, H-3), this home offers unbeatable convenience for work and play. The Pearl Regency community provides resort-style amenities including a swimming pool, jacuzzi, sauna, tennis courts, BBQ area, exercise room, playground, clubhouse, and recreation areas—perfect for entertaining or relaxing. The MANDATORY in-unit sewer upgrades have already been completed by the homeowner to ensure a smooth and stress free move in. Don't miss your chance to live in comfort, style, and convenience in the heart of Aiea!

Built in 1981

## Essential Information

MLS® #

202522114



Price	\$400,000
Bedrooms	1
Bathrooms	1.00
Full Baths	1
Square Footage	610
Acres	5.15
Year Built	1981
Type	Residential
Sub-Type	Condominium
Style	High Rise
Status	Active

### Community Information

Address	(unit #2204) 98-402 Koauka Loop
Area	PearlCity
Subdivision	PEARLRIDGE
City	Aiea
County	Oahu
State	HI
Zip Code	96701
Condo Name	Pearl Regency

### Amenities

Parking Spaces	1
Parking	Covered, Guest, One Space
View	Coastline, City, Mountain(s), Ocean, Sunset, Sunrise
Has Pool	Yes

### Interior

Interior Features	FullBathOnMainLevel,Storage
-------------------	-----------------------------

### Exterior

Exterior	Concrete
----------	----------

### Additional Information

Days on Market	3
Lease Fee	\$0
Monthly Maintenance Fee	\$783

### Listing Details

Based on information from the Multiple Listing Service of the HiCentral MLS®, Ltd. active listings last updated on October 11th, 2025 at 11:48pm HST. Information is deemed reliable but not guaranteed. Copyright: 2025 by the HiCentral MLS®, Ltd. Listing information is provided exclusively for consumers' personal, non-commercial use and may not be used for any purpose other than to identify prospective properties consumers may be interested in purchasing. Some of the active listings appearing on this site may be listed by other REALTORS®. If you are interested in those active listings, our company may represent you as the buyer's agent. If the active listing you are interested in is our company's active listing, you may speak to one of our agents regarding your options for representation.