

# \$825,000 - 87-2229 Pakeke Street, Waianae

MLS® #202521834

**\$825,000**

5 Bedroom, 3.00 Bathroom, 1,871 sqft  
Residential on 0.12 Acres

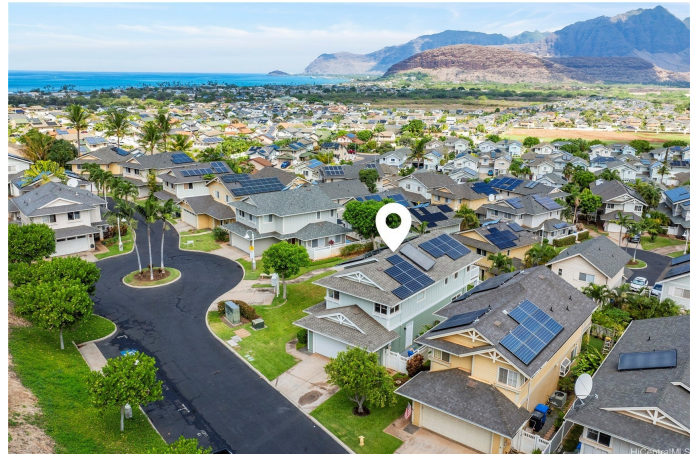
MAILI, Waianae, HI

OCEAN VIEWS! Rare, large 5-bedroom, 3 bath 1,871 sq. ft. ocean view home located on a rim lot in Upper Pakeke St with no homes in front and panoramic mountain, ocean and sunset views behind. Built with upgraded DR Horton options including extra-large primary bedroom with walk-in closet, 144 sq ft deck with spectacular mountain, ocean and sunset views, and a covered downstairs patio. New roof installed in 2023, new refrigerator, remodeled custom tile shower, new baseboards, new garage door and motor, freshly painted interior, and exterior was painted in 2023. Central AC and fans throughout the home keep you cool, plus extra savings come from Solar Heater and (leased) Tesla PV System with a coveted HECO NEM (Net Metering) agreement. Serene cul-de-sac location. Sea Country is a lovely community with pool and recreation area, shops, park, and more. Maintenance fee includes front yard landscaping, sewer, water and trash. Near beaches and close to Kapolei, Oahu's "second city." Seller to credit Buyer \$1,500 for deck resurfacing.

Built in 2006

## Essential Information

MLS® #	202521834
Price	\$825,000
Bedrooms	5



Bathrooms	3.00
Full Baths	3
Square Footage	1,871
Acres	0.12
Year Built	2006
Type	Residential
Sub-Type	Single Family Residence
Style	Detached
Status	Active

### Community Information

Address	87-2229 Pakeke Street
Area	Leeward
Subdivision	MAILI
City	Waianae
County	Oahu
State	HI
Zip Code	96792

### Amenities

Utilities	Cable Available, Electricity Available, High Speed Internet Available, Other, Underground Utilities, Water Available
Parking Spaces	4
Parking	Driveway, Garage, Three or more Spaces
View	Mountain(s), Ocean, Sunset
Pool	Community

### Interior

Interior Features	BedroomOnMainLevel,FullBathOnMainLevel
Stories	Two

### Exterior

Exterior	Double Wall, Steel Frame
Exterior Features	Landscaping

### Additional Information

Days on Market	4
HOA Fees	77
Lease Fee	\$0

Monthly Maintenance Fee     \$620

**Listing Details**

Listing Office                Locations LLC

Based on information from the Multiple Listing Service of the HiCentral MLS®, Ltd. active listings last updated on October 11th, 2025 at 4:19pm HST. Information is deemed reliable but not guaranteed. Copyright: 2025 by the HiCentral MLS®, Ltd. Listing information is provided exclusively for consumers' personal, non-commercial use and may not be used for any purpose other than to identify prospective properties consumers may be interested in purchasing. Some of the active listings appearing on this site may be listed by other REALTORS®. If you are interested in those active listings, our company may represent you as the buyer's agent. If the active listing you are interested in is our company's active listing, you may speak to one of our agents regarding your options for representation.