

\$365,000 - (unit #a1004) 46-255 Kahuhipa Street, Kaneohe

MLS® #202521545

\$365,000

2 Bedroom, 1.00 Bathroom, 723 sqft
Residential on 2.23 Acres

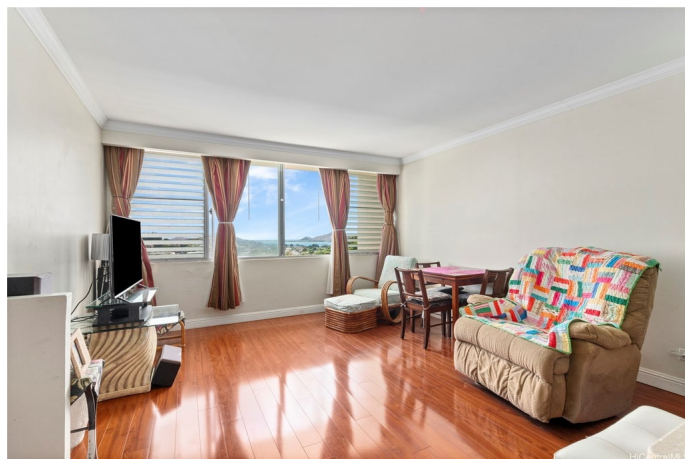
WINDWARD ESTATES, Kaneohe, HI

Fabulous unobstructed ocean view of Kaneohe Bay from kitchen, living and primary bedroom. Natural cool breezes from the oceanside enables comfort living. Well cared for unit bought in 2018 that includes popcorn ceiling removal, crown molding, extra under counter storage with enlarged granite countertop and engineered cherry hardwood floors. Unit has what every buyer looks for ... secured entry, washer/dryer, dishwasher, 6 guest parking stalls, car wash area, tennis court, playground and street parking. Meeting/Conference room and an excellent resident manager living on property. A 10 minute walking distance or 5 minutes drive to Windward mall Longs, Safeway, K Bay poke shop, and numerous restaurants. Maintenance fee includes electricity, hot water, sewer, water, cable, cable boxes and internet. Sold As Is. Agent is related to seller.

Built in 1976

Essential Information

| | |
|----------------|-----------|
| MLS® # | 202521545 |
| Price | \$365,000 |
| Bedrooms | 2 |
| Bathrooms | 1.00 |
| Full Baths | 1 |
| Square Footage | 723 |



| | |
|------------|-------------|
| Acres | 2.23 |
| Year Built | 1976 |
| Type | Residential |
| Sub-Type | Condominium |
| Style | High Rise |
| Status | Active |

Community Information

| | |
|-------------|--------------------------------------|
| Address | (unit #a1004) 46-255 Kahuhipa Street |
| Area | Kaneohe |
| Subdivision | WINDWARD ESTATES |
| City | Kaneohe |
| County | Oahu |
| State | HI |
| Zip Code | 96744 |
| Condo Name | Hale Anaole Apts |

Amenities

| | |
|----------------|----------------------------|
| Parking Spaces | 1 |
| Parking | Assigned, Guest, One Space |
| View | Mountain(s), Ocean |

Interior

| | |
|---------|--------------------|
| Stories | One, Three Or More |
|---------|--------------------|

Exterior

| | |
|----------|-----------------------|
| Exterior | Double Wall, Concrete |
|----------|-----------------------|

Additional Information

| | |
|-------------------------|-------|
| Days on Market | 13 |
| HOA Fees | 42 |
| Lease Fee | \$0 |
| Monthly Maintenance Fee | \$883 |

Listing Details

| | |
|----------------|------------------------|
| Listing Office | Coldwell Banker Realty |
|----------------|------------------------|

Based on information from the Multiple Listing Service of the HiCentral MLS®, Ltd. active listings last updated on October 13th, 2025 at 12:51pm HST. Information is deemed reliable but not guaranteed. Copyright: 2025 by the HiCentral MLS®, Ltd. Listing information is provided exclusively for consumers' personal, non-commercial use and may not be used for any purpose other than to identify prospective properties consumers may be interested in

purchasing. Some of the active listings appearing on this site may be listed by other REALTORS®. If you are interested in those active listings, our company may represent you as the buyer's agent. If the active listing you are interested in is our company's active listing, you may speak to one of our agents regarding your options for representation.