

# \$4,488,000 - (unit #2006) 1118 Ala Moana Boulevard, Honolulu

MLS® #202521519

**\$4,488,000**

3 Bedroom, 2.50 Bathroom, 2,017 sqft  
Residential on 0.00 Acres

KAKAAKO, Honolulu, HI

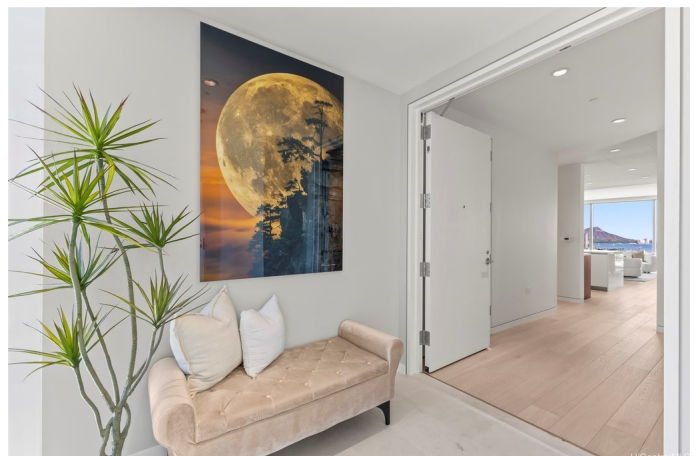
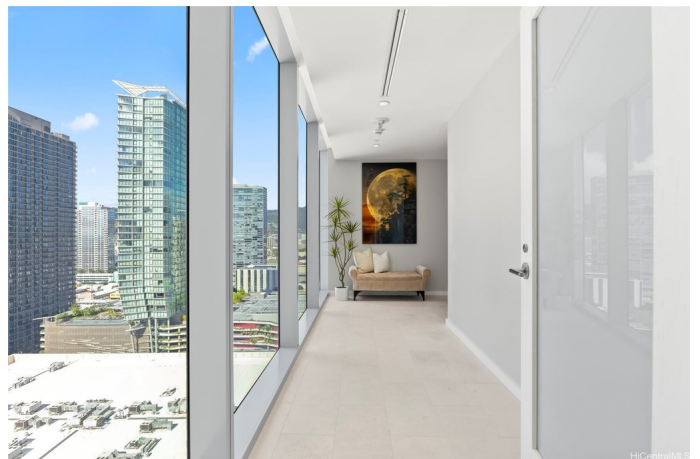
Waiea 2006 â€“ Four-Directional Views & Refined Island Living.

Discover unparalleled luxury at Waiea, the flagship tower of Ward Village. This coveted east-facing 3-bedroom, 2.5-bath residence offers stunning four-directional views of Diamond Head, the Pacific Ocean, Marina, lush mountains, and the vibrant Honolulu skyline.

Enter through a private foyer into a spacious, elegantly designed home with 9â€™™6â€™™ ceilings, hardwood floors, and floor-to-ceiling glass that frames every breathtaking vista. The chefâ€™™s kitchen features Miele appliances, gas cooking, European cabinetry, and a wine fridge. The primary suite boasts a spa-inspired bath with a freestanding tub and onyx finishes.

Waieaâ€™™s world-class amenities include an infinity-edge pool, cabanas, BBQ pavilions, fitness center, golf simulator, theater, guest suites, and the exclusive ownerâ€™™s Sunset Lounge. Concierge services elevate the experience.

Ideally located moments from Ala Moana Beach Park, Whole Foods, and Honoluluâ€™™s best dining and shopping at Ala Moana Center, Waiea 2006 offers an extraordinary blend of sophistication, comfort, and island



lifestyle.

Built in 2016

### Essential Information

MLS® #	202521519
Price	\$4,488,000
Bedrooms	3
Bathrooms	2.50
Full Baths	2
Half Baths	1
Square Footage	2,017
Acres	0.00
Year Built	2016
Type	Residential
Sub-Type	Condominium
Style	High Rise
Status	Active

### Community Information

Address	(unit #2006) 1118 Ala Moana Boulevard
Area	Metro
Subdivision	KAKAAKO
City	Honolulu
County	Oahu
State	HI
Zip Code	96814
Condo Name	Waiea - 1118 Ala Moana

### Amenities

Parking Spaces	2
Parking	Assigned, Covered, Guest, Secured, Two Spaces
View	City, Mountain(s), Canal, Coastline, Ocean, Sunrise
Has Pool	Yes
Pool	Heated

### Interior

Interior Features	FullBathOnMainLevel
-------------------	---------------------

Cooling	Central Air
Stories	One

## Exterior

Exterior	Concrete, Steel Frame, Other
----------	------------------------------

## Additional Information

Days on Market	8
----------------	---

Lease Fee	\$0
-----------	-----

Monthly Maintenance Fee	\$3,101
-------------------------	---------

## Listing Details

Listing Office	List Sotheby's Int'l Realty
----------------	-----------------------------

Based on information from the Multiple Listing Service of the HiCentral MLS®, Ltd. active listings last updated on October 11th, 2025 at 8:49pm HST. Information is deemed reliable but not guaranteed. Copyright: 2025 by the HiCentral MLS®, Ltd. Listing information is provided exclusively for consumers' personal, non-commercial use and may not be used for any purpose other than to identify prospective properties consumers may be interested in purchasing. Some of the active listings appearing on this site may be listed by other REALTORS®. If you are interested in those active listings, our company may represent you as the buyer's agent. If the active listing you are interested in is our company's active listing, you may speak to one of our agents regarding your options for representation.