

\$510,000 - (unit #7a) 91-1056 Mikohu Street, Ewa Beach

MLS® #202521403

\$510,000

2 Bedroom, 1.50 Bathroom, 717 sqft

Residential on 2.58 Acres

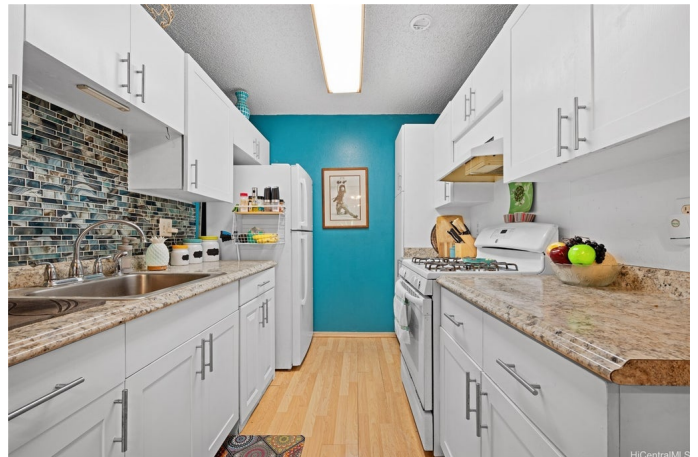
EWA, Ewa Beach, HI

Welcome to Palm Villas in Ewa Beach! This desirable DOWNSTAIRS corner, 2-bdrm, 1.5-bath unit is a great place to call home. Enjoy a bright living area, a functional kitchen, and a private lanai where you can relax and unwind. The lanai has a shed, patio furniture, and plants that will stay. Both bedrooms are comfortable with good closet space, and the half bath adds extra convenience. The unit is located on the cool and breezy side of the building, with window tinting to keep it even cooler. Building 7 is in a desirable part of the complex, away from traffic noise but not too far from Kolowaka Drive, where there is street parking and a bus stop. Upgrades done over the years include a remodeled kitchen, bathroom renovations, newer flooring, newer AC units and most recently, all new screens on the windows and a brand new ceiling fan in the bedroom. This unit includes two assigned parking stalls (one covered and one uncovered), and the complex has ample guest parking. Community pool, BBQ area, and recreation space on the grounds. Palm Villas is a pet-friendly complex and conveniently located near shopping, dining, schools, parks, and beaches. Great for first time buyers or downsizing.

Built in 1991

Essential Information

MLS® # 202521403



Price	\$510,000
Bedrooms	2
Bathrooms	1.50
Full Baths	1
Half Baths	1
Square Footage	717
Acres	2.58
Year Built	1991
Type	Residential
Sub-Type	Condominium
Status	Active

Community Information

Address	(unit #7a) 91-1056 Mikohu Street
Area	Ewaplain
Subdivision	EWA
City	Ewa Beach
County	Oahu
State	HI
Zip Code	96706
Condo Name	Palm Villas 2

Amenities

Parking Spaces	2
Parking	On Street, Assigned, Covered, Guest, One Space, Other
View	None
Has Pool	Yes
Pool	Heated

Interior

Interior Features	BedroomOnMainLevel,FullBathOnMainLevel,Storage
Stories	One

Exterior

Exterior	Double Wall, Wood Frame
----------	-------------------------

School Information

Elementary	Ewa
Middle	Ewa Makai

High Campbell

Additional Information

Days on Market	6
HOA Fees	52
Lease Fee	\$0
Monthly Maintenance Fee	\$682

Listing Details

Listing Office Coldwell Banker Realty

Based on information from the Multiple Listing Service of the HiCentral MLS®, Ltd. active listings last updated on October 11th, 2025 at 6:34pm HST. Information is deemed reliable but not guaranteed. Copyright: 2025 by the HiCentral MLS®, Ltd. Listing information is provided exclusively for consumers' personal, non-commercial use and may not be used for any purpose other than to identify prospective properties consumers may be interested in purchasing. Some of the active listings appearing on this site may be listed by other REALTORS®. If you are interested in those active listings, our company may represent you as the buyer's agent. If the active listing you are interested in is our company's active listing, you may speak to one of our agents regarding your options for representation.