

\$382,000 - (unit #206) 1514 Dillingham Boulevard, Honolulu

MLS® #202520896

\$382,000

2 Bedroom, 1.00 Bathroom, 609 sqft
Residential on 0.89 Acres

KALIHI AREA, Honolulu, HI

WELL KEPT UNIT. GREAT LOCATION
NEAR SCHOOLS, BUS LINES AND STORES.

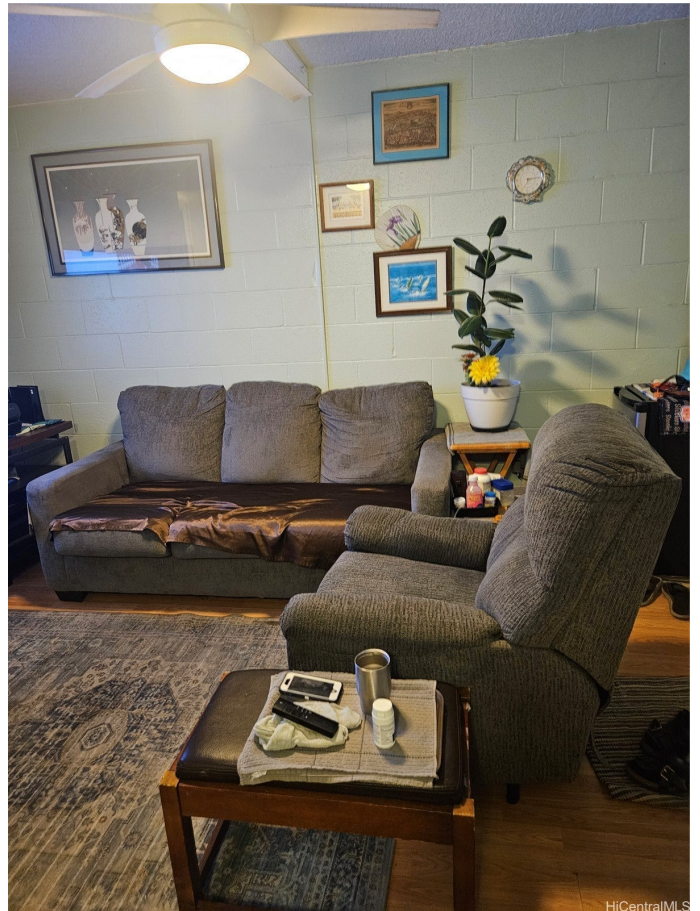
Built in 1967

Essential Information

MLS® #	202520896
Price	\$382,000
Bedrooms	2
Bathrooms	1.00
Full Baths	1
Square Footage	609
Acres	0.89
Year Built	1967
Type	Residential
Sub-Type	Condominium
Style	Low Rise
Status	Active Under Contract

Community Information

Address	(unit #206) 1514 Dillingham Boulevard
Area	Metro
Subdivision	KALIHI AREA
City	Honolulu
County	Oahu
State	HI
Zip Code	96817
Condo Name	Kapalama Makai



Amenities

Parking Spaces	1
Parking	Assigned, One Space
View	None

Interior

Interior Features	Storage
Stories	One

Exterior

Exterior	Concrete, Hollow Tile
----------	-----------------------

School Information

Elementary	Kalihi Kai
Middle	Kalakaua
High	Farrington

Additional Information

Days on Market	20
Lease Fee	\$0
Monthly Maintenance Fee	\$470

Listing Details

Listing Office	Granventure Realty
----------------	--------------------

Based on information from the Multiple Listing Service of the HiCentral MLS®, Ltd. active listings last updated on October 12th, 2025 at 5:04pm HST. Information is deemed reliable but not guaranteed. Copyright: 2025 by the HiCentral MLS®, Ltd. Listing information is provided exclusively for consumers' personal, non-commercial use and may not be used for any purpose other than to identify prospective properties consumers may be interested in purchasing. Some of the active listings appearing on this site may be listed by other REALTORS®. If you are interested in those active listings, our company may represent you as the buyer's agent. If the active listing you are interested in is our company's active listing, you may speak to one of our agents regarding your options for representation.

