

# \$1,295,000 - 2440 Jasmine Street, Honolulu

MLS® #202520498

**\$1,295,000**

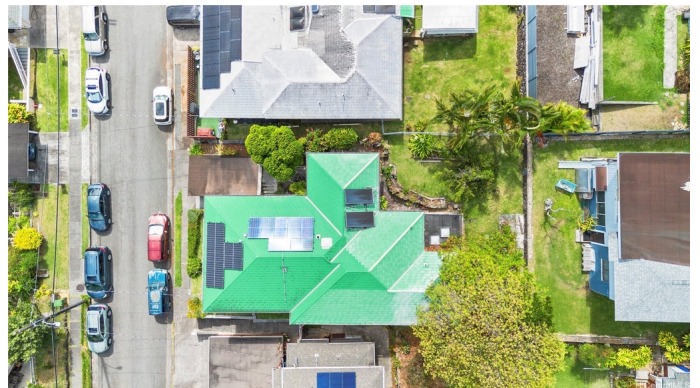
5 Bedroom, 3.00 Bathroom, 1,679 sqft

Residential on 0.12 Acres

PALOLO, Honolulu, HI

Enjoy the serenity of Palolo Valley, surrounded by the greenery of nearby mountains. This 5 bedroom, 3 bathroom home includes a newly built studio style cottage with separate entrance, underneath the main home. Both units are powered by Tesla's Solar Panel with battery storage, which made electricity bills very minuscule. Recent renovation also includes contemporary Japanese style bathtubs. Car Port is EV Outlet ready. Credit will be offered if Buyer needs to replace flooring. To be sold AS-IS. About an 8 minute drive to Kaimuki shops and H1 freeway entrance, 12 minute drive to Kahala Mall when traffic is light. Bus stop is approximately at 2-minute walking distance, currently being served by TheBus line # 200. Palolo Valley District Park is within walking distance, featuring a swimming pool, tennis courts, volleyball courts, basketball courts and a baseball field.

Built in 1950



## Essential Information

MLS® #	202520498
Price	\$1,295,000
Bedrooms	5
Bathrooms	3.00
Full Baths	3
Square Footage	1,679
Acres	0.12

Year Built	1950
Type	Residential
Sub-Type	Single Family Residence
Style	Cottage, Detached, Studio
Status	Active Under Contract

### **Community Information**

Address	2440 Jasmine Street
Area	DiamondHd
Subdivision	PALOLO
City	Honolulu
County	Oahu
State	HI
Zip Code	96816

### **Amenities**

Utilities	Above Ground Utilities, Cable Available, Electricity Available, Other, Phone Available, Water Available
Parking Spaces	1
Parking	Carport, One Car Garage, One Space, On Street
View	Mountain(s)
Pool	None

### **Interior**

Stories	Two
---------	-----

### **Exterior**

Exterior	Single Wall, Wood Frame
----------	-------------------------

### **School Information**

Elementary	Palolo
Middle	Jarrett
High	Kaimuki

### **Additional Information**

Days on Market	17
Lease Fee	\$0

### **Listing Details**

Listing Office	Interwave Realty LLC
----------------	----------------------

Based on information from the Multiple Listing Service of the HiCentral MLS®, Ltd. active listings last updated on October 12th, 2025 at 2:34am HST. Information is deemed reliable but not guaranteed. Copyright: 2025 by the HiCentral MLS®, Ltd. Listing information is provided exclusively for consumers' personal, non-commercial use and may not be used for any purpose other than to identify prospective properties consumers may be interested in purchasing. Some of the active listings appearing on this site may be listed by other REALTORS®. If you are interested in those active listings, our company may represent you as the buyer's agent. If the active listing you are interested in is our company's active listing, you may speak to one of our agents regarding your options for representation.