

\$455,000 - (unit #816) 1850 Ala Moana Boulevard, Honolulu

MLS® #202520260

\$455,000

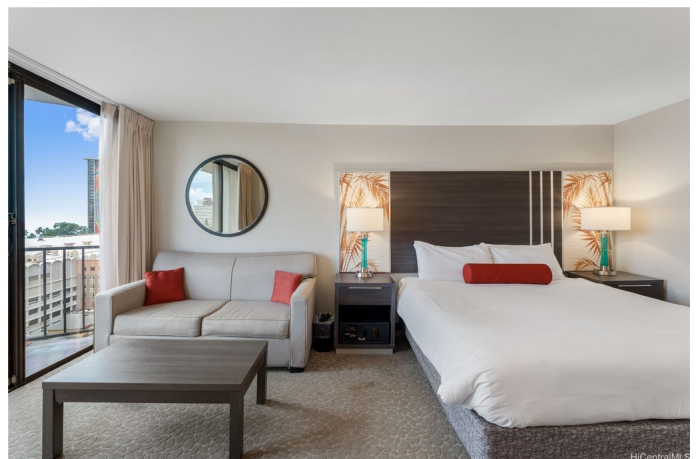
0 Bedroom, 1.00 Bathroom, 321 sqft
Residential on 0.00 Acres

WAIKIKI, Honolulu, HI

The best of Palms at Waikiki, featured in one unit. One of the larger studio suites available with parking, this spacious & renovated legal short-term rental is ready for hotel pool enrollment or self-management. Preferred East facing unit with views of Diamondhead, ocean and the cityscape, a real life postcard. Grossing approx. \$63,000+ in rental income, this highly rated (4.96 Stars /70 Reviews /90% Occupancy) offers an exceptional opportunity for income generation and leisure visits; ideal for those in search of a turn key vacation home! Located at the gateway into Waikiki, and all within a few blocks, you'll find Kahanamoku Beach & Lagoon, endless dining options, convenience stores and world renowned hotels. A true find and one of a kind, Unit 816 is the whole package. Renovated in 2020 through the hotel refresh program with custom touches, this unit stands out from the rest. Deeded parking is yours to utilize while on site, or for guest's personal use. On site pool, BBQ, fitness center and laundry facility makes vacations a breeze. This quaint and well managed Condotel has 24 hr. security, front desk, dining & bell services. Come see the best of Palms at Waikiki!

Built in 1970

Essential Information



MLS® #	202520260
Price	\$455,000
Bathrooms	1.00
Full Baths	1
Square Footage	321
Acres	0.00
Year Built	1970
Type	Residential
Sub-Type	Condominium
Status	Active

Community Information

Address	(unit #816) 1850 Ala Moana Boulevard
Area	Metro
Subdivision	WAIKIKI
City	Honolulu
County	Oahu
State	HI
Zip Code	96815
Condo Name	Palms at Waikiki

Amenities

Parking Spaces	1
Parking	Assigned, Covered, One Space, Secured
View	City, Mountain(s), Ocean
Has Pool	Yes

Interior

Interior Features	FullBathOnMainLevel
Cooling	Central Air
Stories	One

Exterior

Exterior	Concrete
----------	----------

Additional Information

Days on Market	27
Lease Fee	\$0
Monthly Maintenance Fee	\$798

Listing Details

Listing Office Refined Real Estate Hawaii LLC

Based on information from the Multiple Listing Service of the HiCentral MLS®, Ltd. active listings last updated on October 13th, 2025 at 1:48am HST. Information is deemed reliable but not guaranteed. Copyright: 2025 by the HiCentral MLS®, Ltd. Listing information is provided exclusively for consumers' personal, non-commercial use and may not be used for any purpose other than to identify prospective properties consumers may be interested in purchasing. Some of the active listings appearing on this site may be listed by other REALTORS®. If you are interested in those active listings, our company may represent you as the buyer's agent. If the active listing you are interested in is our company's active listing, you may speak to one of our agents regarding your options for representation.