

# \$290,000 - (unit #1203) 419a Atkinson Drive, Honolulu

MLS® #202519581

**\$290,000**

2 Bedroom, 1.00 Bathroom, 664 sqft

Residential on 0.00 Acres

ALA MOANA, Honolulu, HI

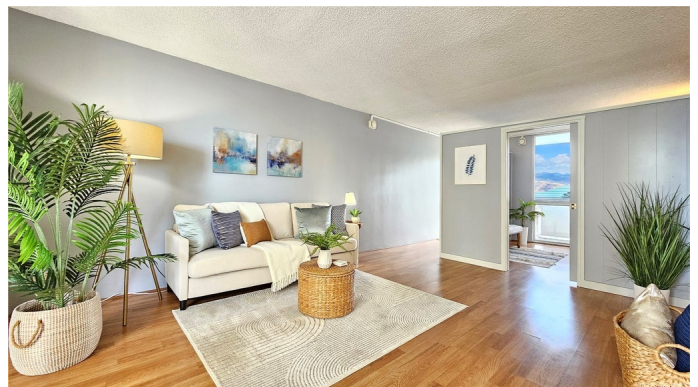
Come home and enjoy life at the Atkinson Towers! a charming Fee Simple 2-bedroom, 1-bath that is ready to move in or rent out with leased parking stall ( leased till 2043 ) and a storage unit. Centrally located at the edge of Waikiki & Kakaako. and with easy access to Airport, Universities , Shopping and Entertainment. Across the Ala Moana Beach Park & Shopping Center, the Yacht Harbor and Bus line. Flexible living as 2 bedroom or 1 bedroom with an office/den. Price to sell! Building has 100% hurricane insurance coverage. Do not miss out Act now!

Built in 1959

## Essential Information

|                |                       |
|----------------|-----------------------|
| MLS® #         | 202519581             |
| Price          | \$290,000             |
| Bedrooms       | 2                     |
| Bathrooms      | 1.00                  |
| Full Baths     | 1                     |
| Square Footage | 664                   |
| Acres          | 0.00                  |
| Year Built     | 1959                  |
| Type           | Residential           |
| Sub-Type       | Condominium           |
| Style          | High Rise             |
| Status         | Active Under Contract |

## Community Information



|             |                                  |
|-------------|----------------------------------|
| Address     | (unit #1203) 419a Atkinson Drive |
| Area        | Metro                            |
| Subdivision | ALA MOANA                        |
| City        | Honolulu                         |
| County      | Oahu                             |
| State       | HI                               |
| Zip Code    | 96814                            |
| Condo Name  | Atkinson Towers Inc              |

### **Amenities**

|                |                     |
|----------------|---------------------|
| Parking Spaces | 1                   |
| Parking        | Assigned, One Space |
| View           | Canal, City, Sunset |

### **Interior**

|                   |                            |
|-------------------|----------------------------|
| Interior Features | BedroomOnMainLevel,Storage |
|-------------------|----------------------------|

### **Exterior**

|          |          |
|----------|----------|
| Exterior | Concrete |
|----------|----------|

### **Additional Information**

|                         |       |
|-------------------------|-------|
| Days on Market          | 33    |
| Lease Fee               | \$0   |
| Monthly Maintenance Fee | \$865 |

### **Listing Details**

|                |                        |
|----------------|------------------------|
| Listing Office | Coldwell Banker Realty |
|----------------|------------------------|

Based on information from the Multiple Listing Service of the HiCentral MLS®, Ltd. active listings last updated on October 12th, 2025 at 11:34pm HST. Information is deemed reliable but not guaranteed. Copyright: 2025 by the HiCentral MLS®, Ltd. Listing information is provided exclusively for consumers' personal, non-commercial use and may not be used for any purpose other than to identify prospective properties consumers may be interested in purchasing. Some of the active listings appearing on this site may be listed by other REALTORS®. If you are interested in those active listings, our company may represent you as the buyer's agent. If the active listing you are interested in is our company's active listing, you may speak to one of our agents regarding your options for representation.