

**\$2,395,000 - (unit #2870a And 2884) 2870 Komaia Place,
Honolulu**

MLS® #202519276

\$2,395,000

0 Bedroom, 0.00 Bathroom,
Residential on 0.68 Acres

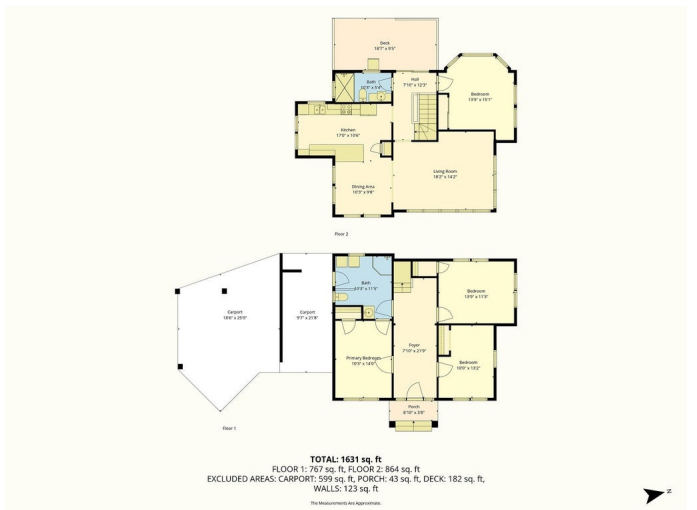
MANOA AREA, Honolulu, HI

Rare Manoa Valley opportunity! Two detached dwellings on a 29,564 sq. ft. upslope, wooded lot zoned R-7.5. The front home (2884 Komaia Pl) is a spacious 4BR/2BA two-story residence (approx. 1,574 sf, built 1931/updated 1972) currently rented for \$4,150/month with a half a year left on the lease. A short walk uphill leads to the second dwelling, a 2BR/1BA single-level cottage, rent is \$2,350, (approx. 988 sf, built 1962) on month-to-month tenancy. Both homes feature wood frame construction, covered lanais, and serene valley views. Kitchens have been updated with granite counters and modern finishes. Current combined rents of approx. \$6,500/month provide strong income potential—ideal for multi-generational use or investment. Property includes a ½ interest in a shared driveway easement and parking for 4 vehicles. Not a CPR; both dwellings are on one TMK. Private, lush setting just minutes from town. To be conveyed in "As-Is" condition. Buyer to verify all information. Appointment only; do not disturb occupants.

Built in 1962

Essential Information

MLS® #	202519276
Price	\$2,395,000
Bathrooms	0.00



Acres	0.68
Year Built	1962
Type	Residential
Sub-Type	Multi Family
Status	Active

Community Information

Address	(unit #2870a And 2884) 2870 Komaia Place
Area	Metro
Subdivision	MANOA AREA
City	Honolulu
County	Oahu
State	HI
Zip Code	96822

Amenities

Utilities	Above Ground Utilities, Cable Available, Electricity Available, High Speed Internet Available, Sewer Available, Water Available, Sewer Connected
Parking Spaces	4
Parking	Covered, Open
View	City, Mountain(s), Sunrise

Interior

Stories	Two
---------	-----

Exterior

Exterior	Double Wall, Wood Frame, Single Wall
----------	--------------------------------------

School Information

Elementary	Manoa
Middle	Stevenson
High	Roosevelt

Additional Information

Days on Market	41
Lease Fee	\$0

Listing Details

Listing Office	Neal Fineman Property Mgmt
----------------	----------------------------

Based on information from the Multiple Listing Service of the HiCentral MLS®, Ltd. active listings last updated on October 12th, 2025 at 8:49am HST. Information is deemed reliable but not guaranteed. Copyright: 2025 by the HiCentral MLS®, Ltd. Listing information is provided exclusively for consumers' personal, non-commercial use and may not be used for any purpose other than to identify prospective properties consumers may be interested in purchasing. Some of the active listings appearing on this site may be listed by other REALTORS®. If you are interested in those active listings, our company may represent you as the buyer's agent. If the active listing you are interested in is our company's active listing, you may speak to one of our agents regarding your options for representation.