

\$425,000 - (unit #705) 1621 Dole Street, Honolulu

MLS® #202518937

\$425,000

2 Bedroom, 2.00 Bathroom, 807 sqft
Residential on 0.83 Acres

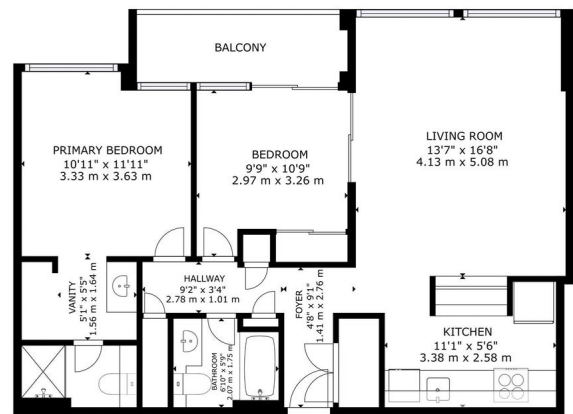
PUNAHOU, Honolulu, HI

Welcome to Punahou Tower, a well-situated condominium in the heart of Makiki and Punahou. Bring your vision or your contractor to this 2-bedroom, 2-bathroom (with storage closet) home that offers the rare chance to create a space that truly reflects your style. Lovingly lived in by a long-term occupant, the unit is in fair condition and ready for its next chapter. A separate private storage unit, in-unit laundry, open lanai, and many other opportunities for personalization. Located just minutes from Punahou School, UH Manoa, and the vibrant conveniences of town, Punahou Tower offers both convenience and community. The building has many amenities including both a men's & women's separate gym and sauna areas, swimming pool, pickleball/volleyball/paddleboard court, Guest Parking, covered recreation area with BBQ, & prime location add lasting value, making this a wonderful place to call home—or a thoughtful investment for the future.

Built in 1973

Essential Information

MLS® #	202518937
Price	\$425,000
Bedrooms	2
Bathrooms	2.00
Full Baths	2
Square Footage	807



GENERAL INFORMATION
SQUARE FOOTAGE: 807 SQ. FT. (TOTAL)
EXCLUDED AREAS: BALCONY (10' x 5', 3.05 SQ. FT.)
TOTAL: 817 SQ. FT. (TOTAL)

Matterport



Acres	0.83
Year Built	1973
Type	Residential
Sub-Type	Condominium
Style	High Rise
Status	Active Under Contract

Community Information

Address	(unit #705) 1621 Dole Street
Area	Metro
Subdivision	PUNAHOU
City	Honolulu
County	Oahu
State	HI
Zip Code	96822
Condo Name	Punahou Tower

Amenities

Parking Spaces	1
Parking	Assigned, Covered, Guest, One Space, On Street, Secured
View	City
Has Pool	Yes

Interior

Stories	Three Or More
---------	---------------

Exterior

Exterior	Double Wall, Hollow Tile, Concrete
----------	------------------------------------

School Information

Elementary	Lunalilo
Middle	Washington
High	Roosevelt

Additional Information

Days on Market	43
Lease Fee	\$0
Monthly Maintenance Fee	\$762

Listing Details

Based on information from the Multiple Listing Service of the HiCentral MLS®, Ltd. active listings last updated on October 12th, 2025 at 3:34pm HST. Information is deemed reliable but not guaranteed. Copyright: 2025 by the HiCentral MLS®, Ltd. Listing information is provided exclusively for consumers' personal, non-commercial use and may not be used for any purpose other than to identify prospective properties consumers may be interested in purchasing. Some of the active listings appearing on this site may be listed by other REALTORS®. If you are interested in those active listings, our company may represent you as the buyer's agent. If the active listing you are interested in is our company's active listing, you may speak to one of our agents regarding your options for representation.