

\$385,000 - (unit #12g) 1425 Liliha Street, Honolulu

MLS® #202518723

\$385,000

2 Bedroom, 1.00 Bathroom, 630 sqft

Residential on 2.15 Acres

LILIHA, Honolulu, HI

Urban living with stunning views in the heart of Honolulu!

Welcome to Liliha Square â€” a highly sought-after community offering convenience and comfort. This beautifully maintained 2-bedroom, 1-bath condominium features 630 sqft of interior space with an open-concept layout, and vinyl flooring. The kitchen includes updated cabinet doors, range/oven, refrigerator, and a countertop dishwasher. Two portable A/C units included for extra comfort. Enjoy breathtaking panoramic city, mountain, ocean, and coastline views from your private lanai, inviting natural light and refreshing cross breezes. The home comes with 1 assigned covered parking stall on the first floor for ultimate convenience.

Liliha Square residents benefit from secure building access, two elevators, community laundry, and an on-site manager. Located above Times Supermarket and steps from restaurants, shops, and services, with quick access to H-1 freeway, Chinatown, Downtown, Ala Moana, Costco, and the iconic Liliha Bakery.

Maintenance Fee: \$650 (includes cable TV, hot water, sewer, water, and common expenses).

Perfect for first-time homebuyers or investors seeking a move-in-ready property in a prime urban location!

Built in 1975



Essential Information

MLS® #	202518723
Price	\$385,000
Bedrooms	2
Bathrooms	1.00
Full Baths	1
Square Footage	630
Acres	2.15
Year Built	1975
Type	Residential
Sub-Type	Condominium
Style	High Rise
Status	Active

Community Information

Address	(unit #12g) 1425 Liliha Street
Area	Metro
Subdivision	LILIHA
City	Honolulu
County	Oahu
State	HI
Zip Code	96817
Condo Name	Liliha Square

Amenities

Parking Spaces	1
Parking	Covered, One Space
View	City, Mountain(s), Ocean, Coastline, Sunrise, Sunset

Interior

Stories	One
---------	-----

Exterior

Exterior	Concrete, Masonry, Stucco
----------	---------------------------

School Information

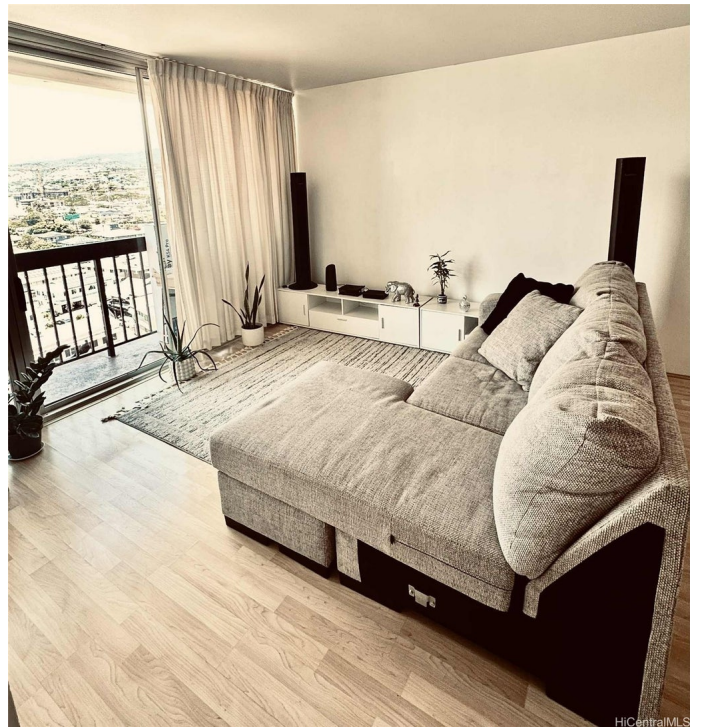
Elementary	Kauluwela
Middle	Keelikolani
High	Mckinley

Additional Information

Days on Market 49
Lease Fee \$0
Monthly Maintenance Fee \$650

Listing Details

Listing Office Century 21 Island Homes



Based on information from the Multiple Listing Service of the HiCentral MLS®, Ltd. active listings last updated on October 12th, 2025 at 10:19pm HST. Information is deemed reliable but not guaranteed. Copyright: 2025 by the HiCentral MLS®, Ltd. Listing information is provided exclusively for consumers' personal, non-commercial use and may not be used for any purpose other than to identify prospective properties consumers may be interested in purchasing. Some of the active listings appearing on this site may be listed by other REALTORS®. If you are interested in those active listings, our company may represent you as the buyer's agent. If the active listing you are interested in is our company's active listing, you may speak to one of our agents regarding your options for representation.