

\$615,000 - (unit #p203) 95-996 Wikao Street, Mililani

MLS® #202518117

\$615,000

2 Bedroom, 2.00 Bathroom, 1,056 sqft

Residential on 8.94 Acres

LAUNANI VALLEY, Mililani, HI

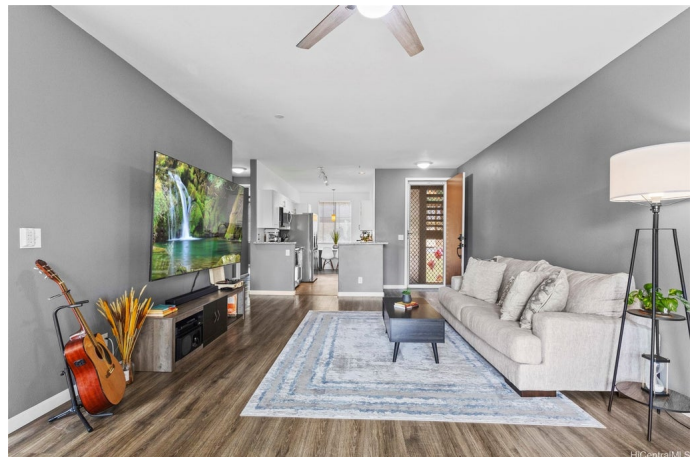
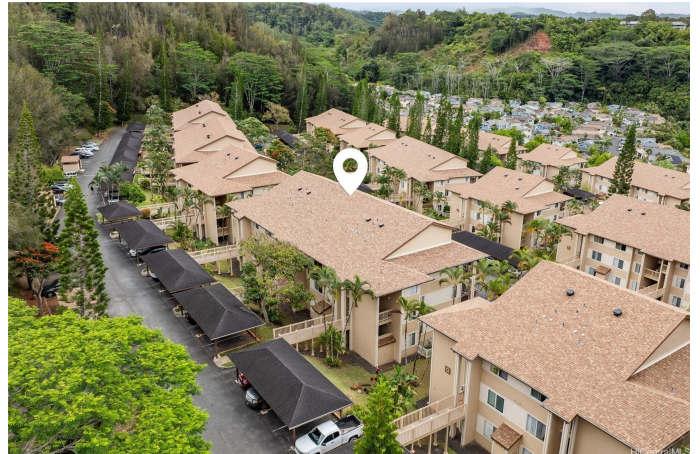
VA Assumable rate at 5.75%. Welcome Home to this beautifully updated 2 bedroom/ 2 bath located in breathtaking Launani Valley! The elegance and style in this stunning home features soaring luxury height ceilings and an open-concept layout. The modern kitchen boasts sleek stainless steel appliances, quartz counter tops, ample cabinetry and a functional flow perfect for entertaining or everyday living. Enjoy easy-care luxury vinyl plank flooring throughout, creating a warm, cohesive feel. Both roomy bedrooms are well-appointed, with a spacious primary suite offering lots of closet space and an oversized shower for added luxury. Move outside to your private patio – ideal for savoring your favorite morning beverage or relaxing in the evening breeze. With two assigned parking stalls that lead directly to your front door (yes, no stairs), convenience is built in. Close to Schofield, Wheeler AFB, freeway access, shopping and local eateries. Community pool with jacuzzi, playgrounds, basketball court, tennis courts and walking path available for use. This gorgeous, move-in ready oasis combines modern finishes with timeless charm. Don't miss the opportunity to make this your perfect retreat!

Built in 1995

Essential Information

MLS® #

202518117



Price	\$615,000
Bedrooms	2
Bathrooms	2.00
Full Baths	2
Square Footage	1,056
Acres	8.94
Year Built	1995
Type	Residential
Sub-Type	Condominium
Style	Low Rise
Status	Active

Community Information

Address	(unit #p203) 95-996 Wikao Street
Area	Central
Subdivision	LAUNANI VALLEY
City	Mililani
County	Oahu
State	HI
Zip Code	96789
Condo Name	Terraces At Launani Valley

Amenities

Parking Spaces	2
Parking	Assigned, Covered, Guest, One Space
View	Garden, Mountain(s)
Has Pool	Yes

Interior

Interior Features	BedroomOnMainLevel,FullBathOnMainLevel,Storage
Stories	One

Exterior

Exterior	Double Wall
----------	-------------

Additional Information

Days on Market	59
Lease Fee	\$0
Monthly Maintenance Fee	\$744

Listing Details

Listing Office eXp Realty

Based on information from the Multiple Listing Service of the HiCentral MLS®, Ltd. active listings last updated on October 12th, 2025 at 5:34pm HST. Information is deemed reliable but not guaranteed. Copyright: 2025 by the HiCentral MLS®, Ltd. Listing information is provided exclusively for consumers' personal, non-commercial use and may not be used for any purpose other than to identify prospective properties consumers may be interested in purchasing. Some of the active listings appearing on this site may be listed by other REALTORS®. If you are interested in those active listings, our company may represent you as the buyer's agent. If the active listing you are interested in is our company's active listing, you may speak to one of our agents regarding your options for representation.