

# \$629,000 - (unit #805) 1561 Kanunu Street, Honolulu

MLS® #202518006

**\$629,000**

3 Bedroom, 2.00 Bathroom, 1,345 sqft

Residential on 0.89 Acres

HOLIDAY MART, Honolulu, HI

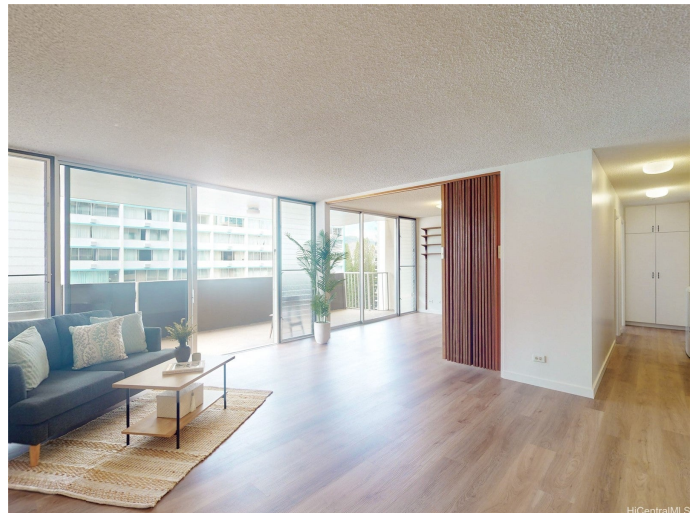
Refreshed and ready for you! With brand-new vinyl-plank flooring and fresh paint throughout the home, this condo at Princess Leilani is versatile for many different situations. The primary suite features en-suite amenities and privacy, with the other two bedrooms located on the other side of the floor plan. The third bedroom is extra versatile with an accordion door to allow it to function as an added space for the living room, or a dedicated bedroom or office. On top of all that, three separate AC zones keep the entire home cool, while each space can decide what temperature they like. Outside, the Princess Leilani has a classic feel with all the amenities you could need, including a covered lanai pool deck, recreation room, gym, on-site staffing, secured entrances, and parking for your guests. It's located in the heart of the up-and-coming Midtown Ala Moana neighborhood, with plenty of shopping and dining nearby including close proximity to Don Quijote for grocery shopping or delicious treats, Ala Moana Center, Ward Village, and Waikiki. Check out the virtual tour for lots more information, or set up a private tour today! NOTE: One or more images have been virtually enhanced.

Built in 1970

## Essential Information

MLS® #

202518006



Price	\$629,000
Bedrooms	3
Bathrooms	2.00
Full Baths	2
Square Footage	1,345
Acres	0.89
Year Built	1970
Type	Residential
Sub-Type	Condominium
Style	High Rise
Status	Active

### Community Information

Address	(unit #805) 1561 Kanunu Street
Area	Metro
Subdivision	HOLIDAY MART
City	Honolulu
County	Oahu
State	HI
Zip Code	96814
Condo Name	Princess Leilani

### Amenities

Parking Spaces	2
Parking	Assigned, Covered, Garage, Guest, One Space, Secured
View	City

### Interior

Interior Features	BedroomOnMainLevel,FullBathOnMainLevel
Cooling	Central Air
Stories	One

### Exterior

Exterior	Double Wall, Concrete
----------	-----------------------

### School Information

Elementary	Kaahumanu
Middle	Washington
High	Mckinley

## **Additional Information**

Days on Market      61  
Lease Fee              \$0  
Monthly Maintenance Fee      \$1,720

## **Listing Details**

Listing Office              Marcus Realty

Based on information from the Multiple Listing Service of the HiCentral MLS®, Ltd. active listings last updated on October 12th, 2025 at 9:19pm HST. Information is deemed reliable but not guaranteed. Copyright: 2025 by the HiCentral MLS®, Ltd. Listing information is provided exclusively for consumers' personal, non-commercial use and may not be used for any purpose other than to identify prospective properties consumers may be interested in purchasing. Some of the active listings appearing on this site may be listed by other REALTORS®. If you are interested in those active listings, our company may represent you as the buyer's agent. If the active listing you are interested in is our company's active listing, you may speak to one of our agents regarding your options for representation.