

\$1,990,000 - (unit #809) 1100 Ala Moana Boulevard, Honolulu

MLS® #202517842

\$1,990,000

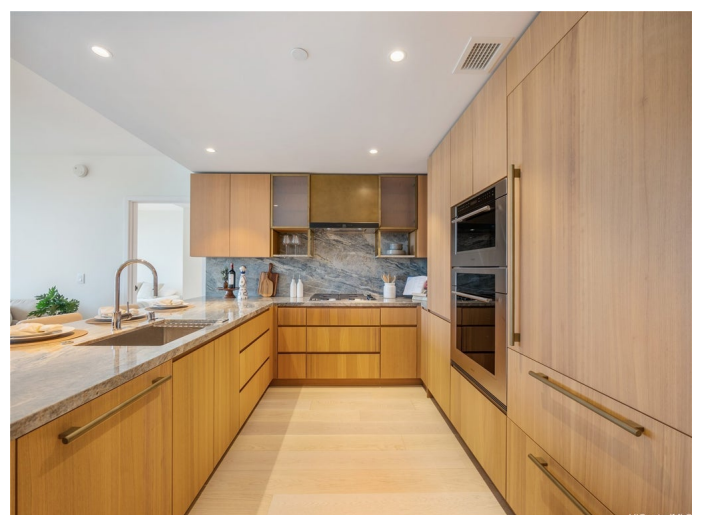
2 Bedroom, 2.00 Bathroom, 1,091 sqft
Residential on 0.00 Acres

KAKAAKO, Honolulu, HI

NEW PRICE! Step into refined island elegance at Victoria Place where timeless design meets modern luxury in the heart of Kakaako. This beautifully designed 2-bedroom, 2-bathroom corner residence showcases breathtaking panoramic views of the ocean, city skyline, and mountains — a captivating backdrop to everyday life. Thoughtfully designed with an open, light-filled layout, the home features a chef’s dream kitchen adorned with integrated, top-tier appliances: a Wolf gas range, oven, and microwave, Sub-Zero refrigerator and wine cooler, and a sleek Cove dishwasher — all seamlessly built in for effortless sophistication. Custom designed cabinetry by Studio Becker. Beyond the home, indulge in over an acre of resort-style amenities curated for elevated living. From ocean-view pools and private guest suites to the exclusive wine cave, spa, fitness center, and 24/7 concierge and valet service — every detail speaks to an uncompromising lifestyle. All of this, just moments from Honolulu’s premier dining, shopping, and cultural experiences within Ward Village. Victoria Place isn’t just a residence — it’s a lifestyle you deserve. Secure your place in one of Hawaii’s most prestigious residence.

Built in 2024

Essential Information



MLS® #	202517842
Price	\$1,990,000
Bedrooms	2
Bathrooms	2.00
Full Baths	2
Square Footage	1,091
Acres	0.00
Year Built	2024
Type	Residential
Sub-Type	Condominium
Style	High Rise
Status	Active Under Contract

Community Information

Address	(unit #809) 1100 Ala Moana Boulevard
Area	Metro
Subdivision	KAKAAKO
City	Honolulu
County	Oahu
State	HI
Zip Code	96814
Condo Name	Victoria Place

Amenities

Parking Spaces	2
Parking	Assigned, Covered, Garage, Secured, Tandem, Two Spaces, Valet
View	Canal, Mountain(s), Ocean, Sunset
Has Pool	Yes
Pool	Heated

Interior

Cooling	Central Air
---------	-------------

Exterior

Exterior	Concrete, Other
----------	-----------------

Additional Information

Days on Market	61
Lease Fee	\$0

Monthly Maintenance Fee \$1,360

Listing Details

Listing Office Keller Williams Honolulu

Based on information from the Multiple Listing Service of the HiCentral MLS®, Ltd. active listings last updated on October 13th, 2025 at 6:54am HST. Information is deemed reliable but not guaranteed. Copyright: 2025 by the HiCentral MLS®, Ltd. Listing information is provided exclusively for consumers' personal, non-commercial use and may not be used for any purpose other than to identify prospective properties consumers may be interested in purchasing. Some of the active listings appearing on this site may be listed by other REALTORS®. If you are interested in those active listings, our company may represent you as the buyer's agent. If the active listing you are interested in is our company's active listing, you may speak to one of our agents regarding your options for representation.