

# \$745,000 - (unit #4f) 250 Ohua Avenue, Honolulu

MLS® #202517512

**\$745,000**

2 Bedroom, 2.00 Bathroom, 1,014 sqft  
Residential on 0.51 Acres

WAIKIKI, Honolulu, HI

Exceptional 2-Bedroom, 2-Bath Unit at 250 Ohua Avenue #4F. Experience comfort and convenience in the heart of Waikiki. This well-maintained condo boasts 1,067 sq ft of interior living space in a highly desirable building. The middle unit offers a spacious layout, filled with bright natural light and stunning views. The galley-style kitchen features a convenient pass-through to the living room, which flows seamlessly into the dining area, creating an ideal space for entertaining or relaxing in style.

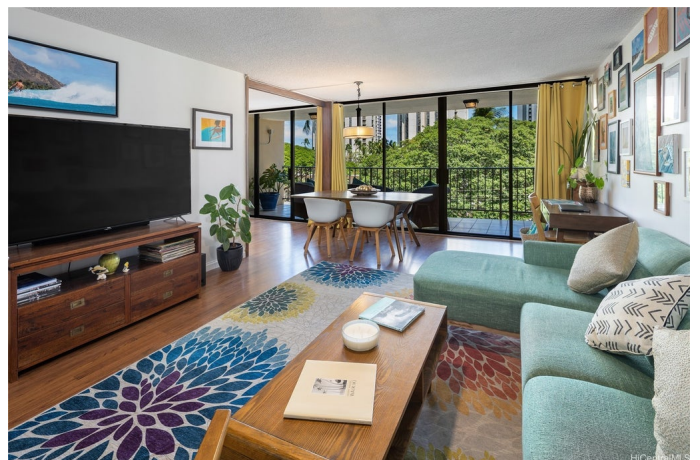
Enjoy year-round comfort with central AC, secured entry via key fobs, two elevators, and security cameras. The building also includes an on-site resident manager, a pool, and one assigned parking stall.

Located just minutes from the beach, shopping, and a variety of restaurants, this home offers island living at its finest. Whether lounging by the pool, catching the waves, or enjoying Waikiki's vibrant nightlife, this property has it all. Don't miss the opportunity to own a piece of paradise.

Built in 1971

## Essential Information

MLS® #	202517512
Price	\$745,000



Bedrooms	2
Bathrooms	2.00
Full Baths	2
Square Footage	1,014
Acres	0.51
Year Built	1971
Type	Residential
Sub-Type	Condominium
Style	High Rise
Status	Pending

### **Community Information**

Address	(unit #4f) 250 Ohua Avenue
Area	Metro
Subdivision	WAIKIKI
City	Honolulu
County	Oahu
State	HI
Zip Code	96815
Condo Name	250 Ohua

### **Amenities**

Parking Spaces	1
Parking	Assigned, One Space, Secured
View	Canal, City, Golf Course, Mountain(s), Ocean
Has Pool	Yes

### **Interior**

Cooling	Central Air
Stories	Three Or More

### **Exterior**

Exterior	Double Wall, Concrete
----------	-----------------------

### **School Information**

Elementary	Jefferson
Middle	Washington
High	Kaimuki

### **Additional Information**

Days on Market	60
Lease Fee	\$0
Monthly Maintenance Fee	\$1,380

## **Listing Details**

Listing Office	Compass
----------------	---------

Based on information from the Multiple Listing Service of the HiCentral MLS®, Ltd. active listings last updated on October 13th, 2025 at 1:48am HST. Information is deemed reliable but not guaranteed. Copyright: 2025 by the HiCentral MLS®, Ltd. Listing information is provided exclusively for consumers' personal, non-commercial use and may not be used for any purpose other than to identify prospective properties consumers may be interested in purchasing. Some of the active listings appearing on this site may be listed by other REALTORS®. If you are interested in those active listings, our company may represent you as the buyer's agent. If the active listing you are interested in is our company's active listing, you may speak to one of our agents regarding your options for representation.