

\$985,000 - (unit #812) 1200 Queen Emma Street, Honolulu

MLS® #202516907

\$985,000

3 Bedroom, 2.00 Bathroom, 1,292 sqft
Residential on 0.00 Acres

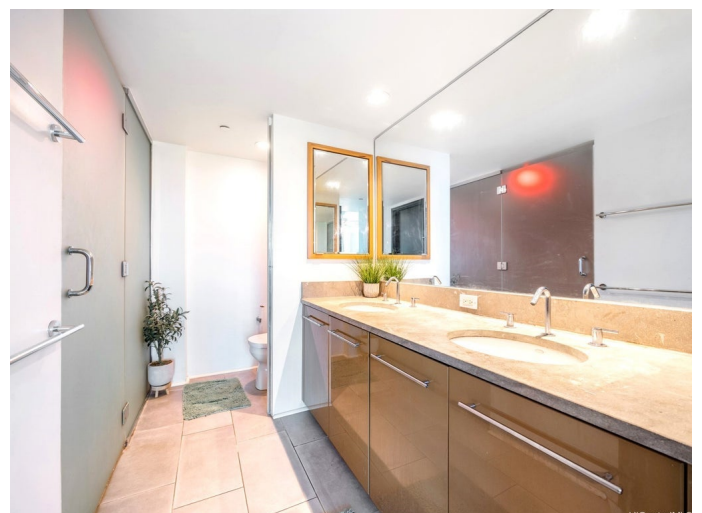
DOWNTOWN, Honolulu, HI

This RARELY available 3 Bed/2 Bath CORNER UNIT has been meticulously maintained and features new vinyl flooring, granite countertops, upgraded cabinets, open floorplan, ample storage, unobstructed Diamond Head/City views, double vanity bathroom sinks, walk-in closet, designer bathroom, cool breezes, large sitting tub & shower, split AC™s, pet friendly (verify), assigned parking, upgraded appliances, Nuuanu Valley views, and much more. Capitol Place offers resort like amenities - large gym, pool, BBQ cabanas areas, recreation room, theater, yoga/dance room, music rooms, dog park, playground, ample guest parking, 24/7 security, and is conveniently located near Downtown Honolulu, easy access to Pali Hwy/H-1/Nimitz Hwy, many restaurants, Safeway, shops, schools, churches, parks, and more.

Built in 2008

Essential Information

MLS® #	202516907
Price	\$985,000
Bedrooms	3
Bathrooms	2.00
Full Baths	2
Square Footage	1,292



Acres	0.00
Year Built	2008
Type	Residential
Sub-Type	Condominium
Style	High Rise
Status	Active

Community Information

Address	(unit #812) 1200 Queen Emma Street
Area	Metro
Subdivision	DOWNTOWN
City	Honolulu
County	Oahu
State	HI
Zip Code	96813
Condo Name	Capitol Place

Amenities

Parking Spaces	2
Parking	Assigned, Covered, Garage, Guest, Two Spaces, Secured, Tandem
View	Coastline, City, Mountain(s), Ocean, Other, Sunrise
Has Pool	Yes

Interior

Interior Features	BedroomOnMainLevel,FullBathOnMainLevel,Storage
Stories	One

Exterior

Exterior	Masonry, Concrete, Stucco
----------	---------------------------

Additional Information

Days on Market	75
Lease Fee	\$0
Monthly Maintenance Fee	\$1,652

Listing Details

Listing Office	True Real Estate Hawaii LLC
----------------	-----------------------------

Based on information from the Multiple Listing Service of the HiCentral MLS®, Ltd. active listings last updated on October 12th, 2025 at 9:41am HST. Information is deemed reliable but not guaranteed. Copyright: 2025 by the HiCentral MLS®, Ltd. Listing information is provided exclusively for consumers' personal, non-commercial use and may not be

used for any purpose other than to identify prospective properties consumers may be interested in purchasing. Some of the active listings appearing on this site may be listed by other REALTORS®. If you are interested in those active listings, our company may represent you as the buyer's agent. If the active listing you are interested in is our company's active listing, you may speak to one of our agents regarding your options for representation.