

\$575,000 - (unit #1202) 425 South Street, Honolulu

MLS® #202516329

\$575,000

1 Bedroom, 1.00 Bathroom, 804 sqft

Residential on 0.00 Acres

KAKAAKO, Honolulu, HI

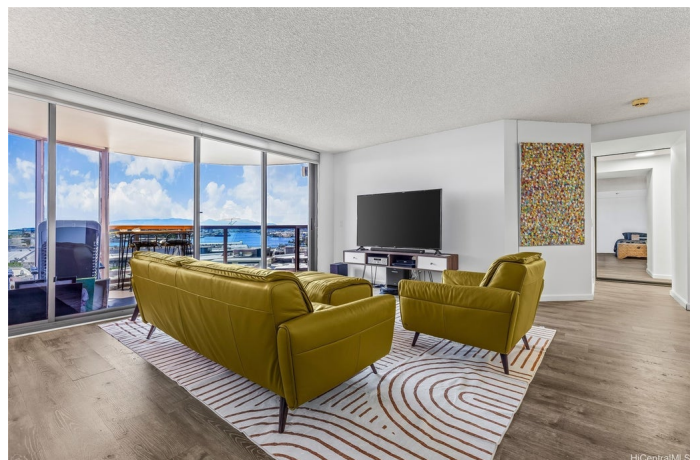
Great buy! One Waterfront Tower is truly a local landmark that defines elegance! Twin 45-story towers on 2.45 acres in Kakaako, designed by Boone & Boone and developed by Bruce Stark. Only 4 units per floor-max privacy. This lovely 1-bed/1-bath condo allows you to enjoy breathtaking ocean views from every window and gorgeous evening sunsets from a covered 130 sqft lanai. The kitchen is equipped with stainless steel appliances, white countertops, and glossy white cabinets with stainless steel handles, giving the kitchen a very clean and contemporary look. The living room perfect for entertaining guests or just enjoying a relaxing evening at home. Wake up every morning and see clear blue ocean water from the comfort of your bedroom. The bathroom also comes with white cabinets, TOTO toilet, and lots of counter space. The resort-like amenities are truly second to none. Enjoy a game of pickleball/tennis and then enjoy a swim in the heated pool. The Amenity deck also comes with a jacuzzi, BBQ area, fire pits, party cabanas, an open-air exercise area, and 2-fitness rooms. Located just a few minutes' drive from World Famous Ala Moana Shopping Center, Ala Moana Beach Park, and Kakaako.

Built in 1989

Essential Information

MLS® #

202516329



Price	\$575,000
Bedrooms	1
Bathrooms	1.00
Full Baths	1
Square Footage	804
Acres	0.00
Year Built	1989
Type	Residential
Sub-Type	Condominium
Style	High Rise
Status	Active

Community Information

Address	(unit #1202) 425 South Street
Area	Metro
Subdivision	KAKAAKO
City	Honolulu
County	Oahu
State	HI
Zip Code	96813
Condo Name	One Waterfront Tower

Amenities

Parking Spaces	1
Parking	Assigned, Covered, One Space
View	Coastline, Ocean

Interior

Interior Features	BedroomOnMainLevel
Cooling	Central Air
Stories	One

Exterior

Exterior	Concrete
----------	----------

School Information

Elementary	Royal
Middle	Keelikolani
High	Mckinley

Additional Information

Days on Market 74

Lease Fee \$0

Monthly Maintenance Fee \$1,504

Listing Details

Listing Office eXp Realty

Based on information from the Multiple Listing Service of the HiCentral MLS®, Ltd. active listings last updated on October 12th, 2025 at 9:41am HST. Information is deemed reliable but not guaranteed. Copyright: 2025 by the HiCentral MLS®, Ltd. Listing information is provided exclusively for consumers' personal, non-commercial use and may not be used for any purpose other than to identify prospective properties consumers may be interested in purchasing. Some of the active listings appearing on this site may be listed by other REALTORS®. If you are interested in those active listings, our company may represent you as the buyer's agent. If the active listing you are interested in is our company's active listing, you may speak to one of our agents regarding your options for representation.