

# \$379,000 - (unit #704) 445 Kaiolu Street, Honolulu

MLS® #202516044

**\$379,000**

1 Bedroom, 1.00 Bathroom, 456 sqft

Residential on 0.00 Acres

WAIKIKI, Honolulu, HI

Here's a move-in ready option at The Rosalei...WITH COVERED PARKING! This corner unit was reimaged in 2022 in sophisticated neutrals with black accents, sleek kitchen cabinets, and contemporary bathroom fixtures. The ceiling was smoothed, the floor covered with glossy ceramic tile. Every outlet is GFCI protected. From 2017-2025, the AOA replaced all plumbing; repaired spalling, painted entire exterior; replaced water heating system and tanks; modernized the elevators; updated pool and deck; repaired the stairs, rebuilt lanai guard rails; redesigned landscaping. Fire sprinklers are in the basement boiler room, trash room, and storage area. The current fire alarm system is tested annually; funds are in the budget for an upgrade. The building has 100% hurricane insurance. Amenities include a saltwater pool and community laundry. This is a very well-managed building with a conscientious, customer-focused, resident manager. Maintenance Fee includes the assessment for the completed improvements: \$1,147.26 for cable TV, electricity, hot water, internet, sewer, water, common elements; add'l \$82.50 for the portable A/C. Total monthly fee is \$1,229.76. Estimated loan payoff is 2034.

Built in 1955

## Essential Information



|                |             |
|----------------|-------------|
| MLS® #         | 202516044   |
| Price          | \$379,000   |
| Bedrooms       | 1           |
| Bathrooms      | 1.00        |
| Full Baths     | 1           |
| Square Footage | 456         |
| Acres          | 0.00        |
| Year Built     | 1955        |
| Type           | Residential |
| Sub-Type       | Condominium |
| Style          | High Rise   |
| Status         | Active      |

### Community Information

|             |                               |
|-------------|-------------------------------|
| Address     | (unit #704) 445 Kaiolu Street |
| Area        | Metro                         |
| Subdivision | WAIKIKI                       |
| City        | Honolulu                      |
| County      | Oahu                          |
| State       | HI                            |
| Zip Code    | 96815                         |
| Condo Name  | Rosalei Ltd                   |

### Amenities

|                |   |
|----------------|---|
| Parking Spaces | 1   |
| Parking        | Assigned, Covered, Garage, One Space, Secured |
| View           | City  |

### Interior

|                   |  |
|-------------------|--|
| Interior Features | BedroomOnMainLevel,FullBathOnMainLevel,Storage |
| Stories           | Three Or More, One                             |

### Exterior

|          |          |
|----------|----------|
| Exterior | Concrete |
|----------|----------|

### School Information

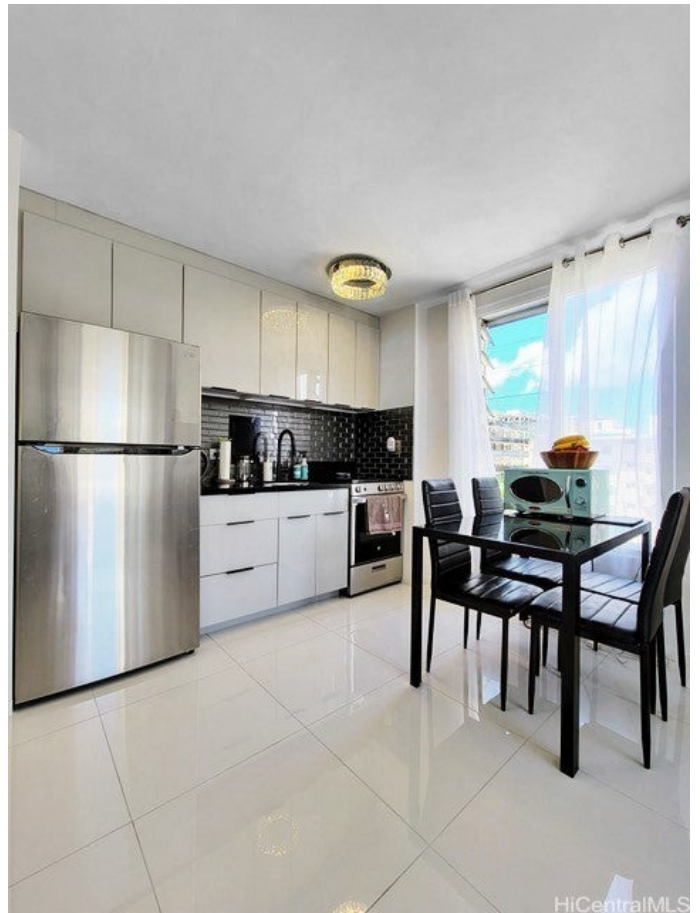
|            |            |
|------------|------------|
| Elementary | Jefferson  |
| Middle     | Washington |
| High       | Kaimuki    |

## Additional Information

Days on Market      83  
Lease Fee              \$0  
Monthly Maintenance Fee      \$1,230

## Listing Details

Listing Office              Coldwell Banker Realty



Based on information from the Multiple Listing Service of the HiCentral MLS®, Ltd. active listings last updated on October 12th, 2025 at 7:20pm HST. Information is deemed reliable but not guaranteed. Copyright: 2025 by the HiCentral MLS®, Ltd. Listing information is provided exclusively for consumers' personal, non-commercial use and may not be used for any purpose other than to identify prospective properties consumers may be interested in purchasing. Some of the active listings appearing on this site may be listed by other REALTORS®. If you are interested in those active listings, our company may represent you as the buyer's agent. If the active listing you are interested in is our company's active listing, you may speak to one of our agents regarding your options for representation.