

# \$220,000 - (unit #2308b) 1060 Kamehameha Highway, Pearl City

MLS® #202515571

**\$220,000**

0 Bedroom, 1.00 Bathroom, 360 sqft  
Residential on 0.00 Acres

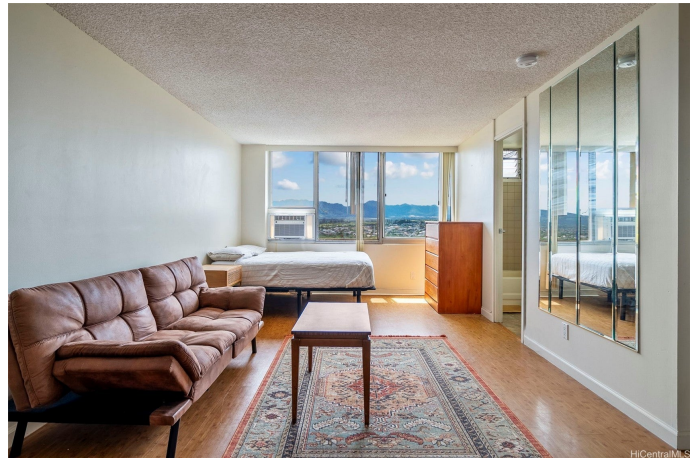
MANANA, Pearl City, HI

LOWEST PRICED STUDIO AT PARK PLAZA FOR JUST \$220,000! Welcome to this move-in ready, investor special, studio at Century Park Plaza, where an exceptional residential experience awaits! Nestled in a prime location, this unit offers breathtaking views of the Waianae Mountain Range, enhanced by a fully secured building and parking area, complete with 24-hour surveillance. Host gatherings with ease, thanks to ample guest parking, and make the most of the community's BBQ and playground areas. Stay active and entertained with newly renovated pickleball, tennis, and basketball courts, or relax in the swimming pool and jacuzzi after a long day. Its central location provides effortless access to highways, shopping, dining, and entertainment. Additionally, you'll be in close proximity to the rail station, Pearl Harbor, and Hickam Air Force Base. Discover why Century Park Plaza is the ideal place to call home. Contact us today to schedule your visit!

Built in 1984

## Essential Information

MLS® #	202515571
Price	\$220,000
Bathrooms	1.00
Full Baths	1



Square Footage	360
Acres	0.00
Year Built	1984
Type	Residential
Sub-Type	Condominium
Style	High Rise
Status	Active Under Contract

### Community Information

Address	(unit #2308b) 1060 Kamehameha Highway
Area	PearlCity
Subdivision	MANANA
City	Pearl City
County	Oahu
State	HI
Zip Code	96782
Condo Name	CENTURY PARK PLAZA

### Amenities

Parking Spaces	1
Parking	Guest, One Space
View	Mountain(s)

### Exterior

Exterior	Concrete
----------	----------

### Additional Information

Days on Market	94
Short Sale	Yes
Lease Fee	\$0
Monthly Maintenance Fee	\$401

### Listing Details

Listing Office	Keller Williams Honolulu
----------------	--------------------------

Based on information from the Multiple Listing Service of the HiCentral MLS®, Ltd. active listings last updated on October 12th, 2025 at 9:48pm HST. Information is deemed reliable but not guaranteed. Copyright: 2025 by the HiCentral MLS®, Ltd. Listing information is provided exclusively for consumers' personal, non-commercial use and may not be used for any purpose other than to identify prospective properties consumers may be interested in purchasing. Some of the active listings appearing on this site may be listed by other REALTORS®. If you are interested in those active listings, our company may represent you as the buyer's agent. If the active listing you are interested in is our company's active listing, you may speak to one of our agents regarding your options for representation.