

# \$1,594,000 - 1708 Nakiu Place, Honolulu

MLS® #202515328

**\$1,594,000**

7 Bedroom, 4.00 Bathroom, 1,504 sqft

Residential on 0.12 Acres

MANOA-LOWER, Honolulu, HI

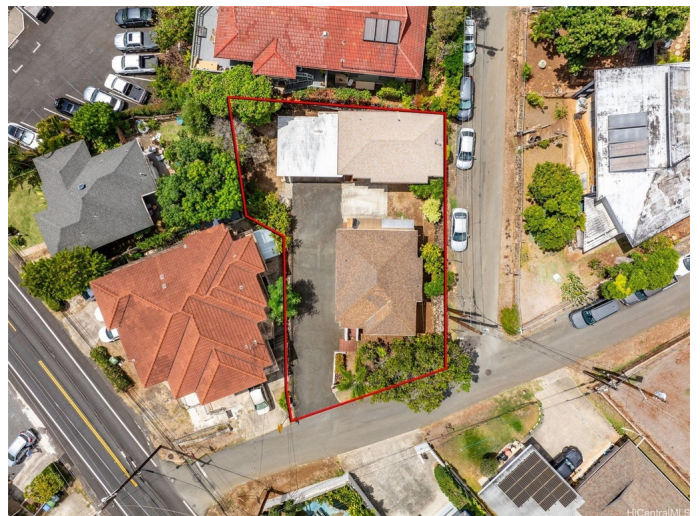
Priced at \$300,000 below assessed value!!  
Two DETACHED MANOA HOMES on a corner lot. Live in the original home. Rent out the remaining rentals for an estimated \$4500/mo to offset your mortgage. The main home is a 5 bedroom 2 bath house consisting of a 2/1 upstairs and a 3/1 downstairs. The second home features a 1/1 upstairs and studio downstairs. Looking for a great investment? Rent all the units for an estimated \$6,460/month. This property offers ample parking, with a 2-car carport and additional space along the driveway, great yard spaces w/ mature fruit trees, and each house has its own electric meter. This is a perfect property for that savvy owner/investor looking to live in the desirable Noelani Elem. School district or within a short distance to UH and Punahou. Offering convenience and flexibility, this is a fantastic opportunity in a prime neighborhood—don't miss out! Tenant occupied-photos reflect the property when vacant. Monthly tax amount based on 2024 Tax assessed values. Sq ft listed in MLS does not match tax records. Please do not disturb the tenants.

Built in 1945

## Essential Information

MLS® # 202515328

Price \$1,594,000



Bedrooms	7
Bathrooms	4.00
Full Baths	4
Square Footage	1,504
Acres	0.12
Year Built	1945
Type	Residential
Sub-Type	Duplex
Style	Detached, Multiplex, Duplex
Status	Active

### **Community Information**

Address	1708 Nakiu Place
Area	Metro
Subdivision	MANOA-LOWER
City	Honolulu
County	Oahu
State	HI
Zip Code	96822

### **Amenities**

Utilities	Above Ground Utilities, Electricity Available, High Speed Internet Available, Other, Water Available
Parking Spaces	4
Parking	Carport, Driveway, Three or more Spaces
View	City
Pool	None

### **Interior**

Stories	Two
---------	-----

### **Exterior**

Exterior	Single Wall, Wood Frame, Brick
----------	--------------------------------

### **School Information**

Elementary	Noelani
Middle	Stevenson
High	Roosevelt

### **Additional Information**

Days on Market 88

Lease Fee \$0

## **Listing Details**

Listing Office REMAX Hawaii

Based on information from the Multiple Listing Service of the HiCentral MLS®, Ltd. active listings last updated on October 13th, 2025 at 12:34am HST. Information is deemed reliable but not guaranteed. Copyright: 2025 by the HiCentral MLS®, Ltd. Listing information is provided exclusively for consumers' personal, non-commercial use and may not be used for any purpose other than to identify prospective properties consumers may be interested in purchasing. Some of the active listings appearing on this site may be listed by other REALTORS®. If you are interested in those active listings, our company may represent you as the buyer's agent. If the active listing you are interested in is our company's active listing, you may speak to one of our agents regarding your options for representation.