

# **\$1,056,000 - (unit #3511) 1200 Queen Emma Street, Honolulu**

MLS® #202514250

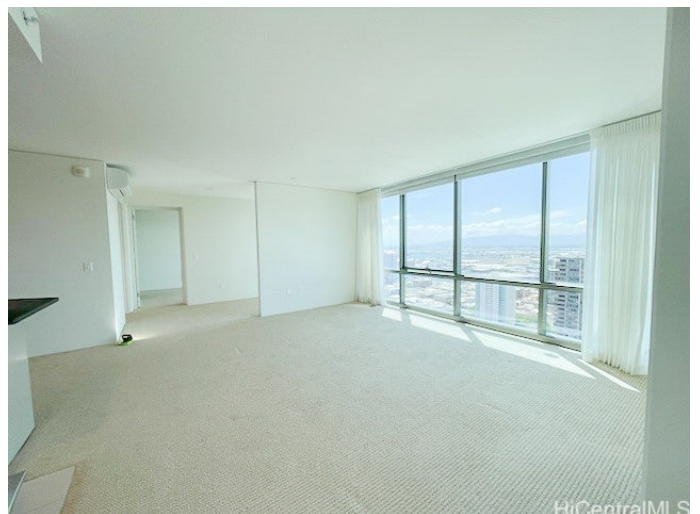
**\$1,056,000**

2 Bedroom, 2.00 Bathroom, 1,268 sqft  
Residential on 0.00 Acres

DOWNTOWN, Honolulu, HI

CAPITOL PLACE Upscale. Uptown. Unequaled. Experience the best of luxury urban living at CAPITOL PLACE in the heart of Downtown Honolulu. PENTHOUSE 2 bed, 2 bath unit with den and TWO PARKING 1,268 sq ft. Well-appointed kitchen with VIKING appliances, natural STONE countertops, SPLIT AC (4), WASHER/DRYER, WINE COOLER, MICROWAVE, FLOOR-TO-CEILING GLASS WINDOWS THROUGHOUT, WALK-IN CLOSET in the primary bedroom, freshly repainted, NEW 50-gallon electric water heater and STORAGE LOCKER. TWO parking stalls. Entertain in style with BBQ areas, while your four-legged friends enjoy the dedicated dog park. Thereâ€™s also a childrenâ€™s play area. The Penthouse units have additional 3 feet the length of unit from Primary Bedroom, Living~Dining area, den, second bedroom. Very SPACIOUS!! Enjoy recently upgraded RESORT-LIKE AMENITIES: including infinity edge swimming pool, jacuzzi, function room, movie theater, state-of-the-art fitness center, playground, two music rooms, and 24-hour security. PET FRIENDLY residence. Ideally located EASY freeway access in both directions, shopping, and trendy restaurants, Capitol Place offers both LUXURY and CONVENIENCE in the vibrant downtown area.

Built in 2008



## Essential Information

MLS® #	202514250
Price	\$1,056,000
Bedrooms	2
Bathrooms	2.00
Full Baths	2
Square Footage	1,268
Acres	0.00
Year Built	2008
Type	Residential
Sub-Type	Condominium
Style	High Rise, Penthouse
Status	Active

## Community Information

Address	(unit #3511) 1200 Queen Emma Street
Area	Metro
Subdivision	DOWNTOWN
City	Honolulu
County	Oahu
State	HI
Zip Code	96813
Condo Name	Capitol Place

## Amenities

Parking Spaces	2
Parking	Covered, One Space, Secured, Garage, Guest
View	Coastline, City, Mountain(s), Sunset, Sunrise
Has Pool	Yes

## Interior

Interior Features	BedroomOnMainLevel,FullBathOnMainLevel,Storage
-------------------	------------------------------------------------

## Exterior

Exterior	Concrete
----------	----------

## School Information

Elementary	Royal
Middle	Keelikolani

High Mckinley

### **Additional Information**

Days on Market 90  
Lease Fee \$0  
Monthly Maintenance Fee \$1,618

### **Listing Details**

Listing Office Luxury Homes International

Based on information from the Multiple Listing Service of the HiCentral MLS®, Ltd. active listings last updated on October 12th, 2025 at 5:34pm HST. Information is deemed reliable but not guaranteed. Copyright: 2025 by the HiCentral MLS®, Ltd. Listing information is provided exclusively for consumers' personal, non-commercial use and may not be used for any purpose other than to identify prospective properties consumers may be interested in purchasing. Some of the active listings appearing on this site may be listed by other REALTORS®. If you are interested in those active listings, our company may represent you as the buyer's agent. If the active listing you are interested in is our company's active listing, you may speak to one of our agents regarding your options for representation.