

\$2,298,900 - 91-1040 Waikapuna Street, Ewa Beach

MLS® #202513664

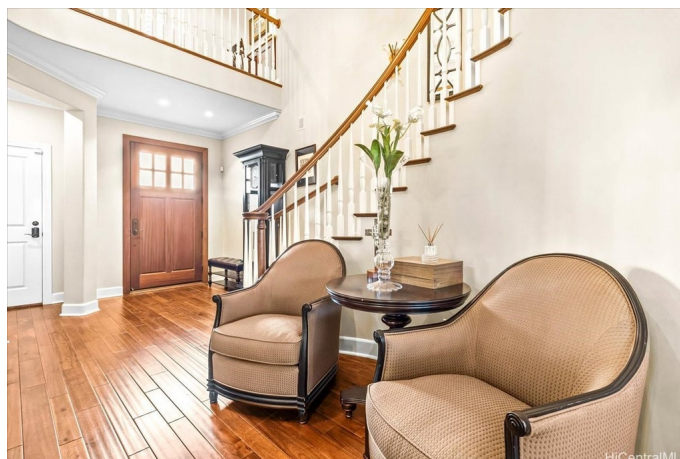
\$2,298,900

5 Bedroom, 4.50 Bathroom, 3,539 sqft

Residential on 0.13 Acres

HOAKALEI-KA MAKANA, Ewa Beach, HI

This impressive 5-bedroom, 4.5-bathroom home is located in the desirable Ka Makana community and boasts stunning views of the 12th hole pond at the prestigious Hoakalei golf course. With 3,539 square feet of living space, elegant engineered wood floors, high-end Viking appliances in the gourmet kitchen, and a granite island for entertaining, this home is designed for luxury living. It features three luxurious en-suite bedrooms for privacy, versatile interconnected rooms, ample storage with multiple walk-in closets, and a unique dual garage setup. The 2-car garage has been transformed into an entertainment hub with three TVs but can easily be converted back to its original use, complemented by a separate 1-car garage. Residents can also enjoy two covered lanais and easy access to local attractions including pristine beaches, the Wai Kai wave pool, fine dining, and the renowned Ka Makana Alii Mall. Additionally, HOA amenities include trash pickup, phone service, internet access, and cable TV. This home offers a luxurious escape for everyday living in a vibrant community.



Built in 2009

Essential Information

MLS® # 202513664

Price \$2,298,900

Bedrooms 5

Bathrooms	4.50
Full Baths	4
Half Baths	1
Square Footage	3,539
Acres	0.13
Year Built	2009
Type	Residential
Sub-Type	Single Family Residence
Style	Detached
Status	Active

Community Information

Address	91-1040 Waikapuna Street
Area	Ewaplain
Subdivision	HOAKALEI-KA MAKANA
City	Ewa Beach
County	Oahu
State	HI
Zip Code	96706

Amenities

Utilities	Cable Available, Electricity Available, High Speed Internet Available, Other, Underground Utilities, Water Available
Parking Spaces	3
Parking	Driveway, Garage, Three or more Spaces, On Street
View	Golf Course
Pool	Community

Interior

Interior Features	BedroomOnMainLevel,FullBathOnMainLevel
Stories	Two

Exterior

Exterior	Double Wall, Other, Steel Frame
Exterior Features	Landscaping
Roof	Composition

Additional Information

Days on Market	120
----------------	-----

Lease Fee \$0

Monthly Maintenance Fee \$281

Listing Details

Listing Office Island Sun Real Estate Pros

Based on information from the Multiple Listing Service of the HiCentral MLS®, Ltd. active listings last updated on October 12th, 2025 at 7:20pm HST. Information is deemed reliable but not guaranteed. Copyright: 2025 by the HiCentral MLS®, Ltd. Listing information is provided exclusively for consumers' personal, non-commercial use and may not be used for any purpose other than to identify prospective properties consumers may be interested in purchasing. Some of the active listings appearing on this site may be listed by other REALTORS®. If you are interested in those active listings, our company may represent you as the buyer's agent. If the active listing you are interested in is our company's active listing, you may speak to one of our agents regarding your options for representation.