

\$235,000 - (unit #302) 636 Nalanui Street, Honolulu

MLS® #202513363

\$235,000

0 Bedroom, 1.00 Bathroom, 340 sqft

Residential on 0.18 Acres

LILIHA, Honolulu, HI

Discover this charming studio/1 bath unit with 1 covered parking in Nalanui in Liliha, perfect for those seeking convenience w/ style! This updated unit boasts fresh interior paint, new vinyl plank flooring, and thereâ€™s community laundry on each floor. The prime location is just one block from the iconic Liliha Bakery, and just minutes from downtown Honolulu's array of restaurants, diverse shopping, and entertainment options. A few photos have been virtually staged(enhanced).

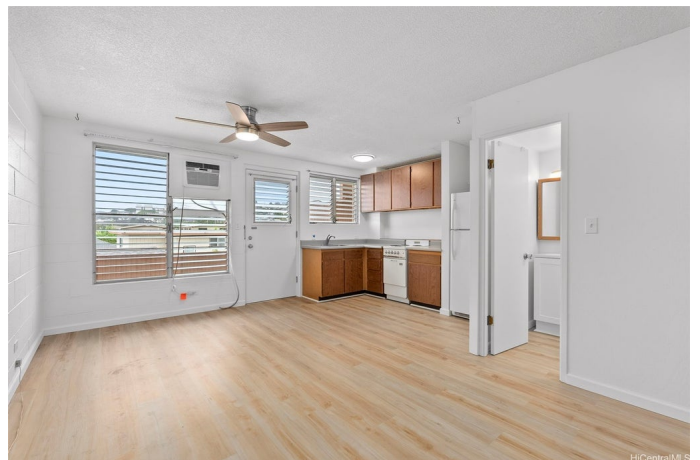
Built in 1964

Essential Information

MLS® #	202513363
Price	\$235,000
Bathrooms	1.00
Full Baths	1
Square Footage	340
Acres	0.18
Year Built	1964
Type	Residential
Sub-Type	Condominium
Style	Low Rise
Status	Active Under Contract

Community Information

Address	(unit #302) 636 Nalanui Street
Area	Metro
Subdivision	LILIHA



City	Honolulu
County	Oahu
State	HI
Zip Code	96817
Condo Name	Nalanui Apts

Amenities

Parking Spaces	1
Parking	One Space, Assigned, Covered, On Street
View	City

Interior

Interior Features	BedroomOnMainLevel,FullBathOnMainLevel
Stories	One

Exterior

Exterior	Concrete
----------	----------

Additional Information

Days on Market	127
Lease Fee	\$0
Monthly Maintenance Fee	\$361

Listing Details

Listing Office	REMAX Hawaii
----------------	--------------

Based on information from the Multiple Listing Service of the HiCentral MLS®, Ltd. active listings last updated on October 13th, 2025 at 6:22am HST. Information is deemed reliable but not guaranteed. Copyright: 2025 by the HiCentral MLS®, Ltd. Listing information is provided exclusively for consumers' personal, non-commercial use and may not be used for any purpose other than to identify prospective properties consumers may be interested in purchasing. Some of the active listings appearing on this site may be listed by other REALTORS®. If you are interested in those active listings, our company may represent you as the buyer's agent. If the active listing you are interested in is our company's active listing, you may speak to one of our agents regarding your options for representation.