

\$99,000 - (unit #1006a) 2450 Prince Edward Street, Honolulu

MLS® #202513082

\$99,000

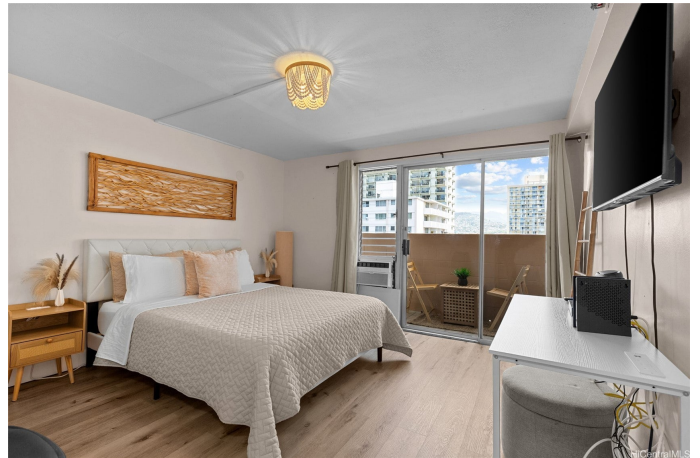
0 Bedroom, 1.00 Bathroom, 255 sqft
Residential on 0.22 Acres

WAIKIKI, Honolulu, HI

This is the perfect Airbnb or vacation rental youâ€™ve been searching for! Just 1.5 blocks from Waikiki Beach and Dukeâ€™s Statue, this turnkey unit offers an unbeatable location in the heart of Waikiki. Fully furnished and designed for comfort, the unit features laminate and tile flooring for easy maintenance and a private lanai with beautiful mountain views. Kuhio Village 2 is a secure high-rise that allows short-term rentals, making it a highly desirable investment property. The building is pet-friendly, allowing one pet under 20 pounds. With its prime location, youâ€™ll be just steps from the International Marketplace, Lilia Grocery Store, shops, restaurants, surf spots, and all the vibrant entertainment that Waikiki has to offer. As a leasehold property, the current lease extends until 2033. However, it remains a popular choice for investors due to its lower purchase price and ability to rent on a daily, weekly, or nightly basis. Maintenance fees cover cable TV, electricity, hot water, sewer, and common area upkeep. Donâ€™t miss this rare opportunity to own a legal vacation rental in one of Waikikiâ€™s most sought-after locations!

Built in 1975

Essential Information



MLS® #	202513082
Price	\$99,000
Bathrooms	1.00
Full Baths	1
Square Footage	255
Acres	0.22
Year Built	1975
Type	Residential
Sub-Type	Condominium
Style	High Rise
Status	Active

Community Information

Address	(unit #1006a) 2450 Prince Edward Street
Area	Metro
Subdivision	WAIKIKI
City	Honolulu
County	Oahu
State	HI
Zip Code	96815
Condo Name	Kuhio Village 2

Amenities

Parking	None
View	City, Mountain(s)

Interior

Stories	One, Three Or More
---------	--------------------

Exterior

Exterior	Concrete
----------	----------

Additional Information

Days on Market	135
Lease Fee	\$297
Monthly Maintenance Fee	\$639

Listing Details

Listing Office	Coldwell Banker Realty
----------------	------------------------

Based on information from the Multiple Listing Service of the HiCentral MLS®, Ltd. active listings last updated on October 12th, 2025 at 9:41am HST. Information is deemed reliable but not guaranteed. Copyright: 2025 by the HiCentral MLS®, Ltd. Listing information is provided exclusively for consumers' personal, non-commercial use and may not be used for any purpose other than to identify prospective properties consumers may be interested in purchasing. Some of the active listings appearing on this site may be listed by other REALTORS®. If you are interested in those active listings, our company may represent you as the buyer's agent. If the active listing you are interested in is our company's active listing, you may speak to one of our agents regarding your options for representation.