

# **\$609,000 - (unit #302) 91-1227 Kamaaha Avenue, Kapolei**

---

MLS® #202512229

**\$609,000**

2 Bedroom, 2.00 Bathroom, 920 sqft  
Residential on 0.00 Acres

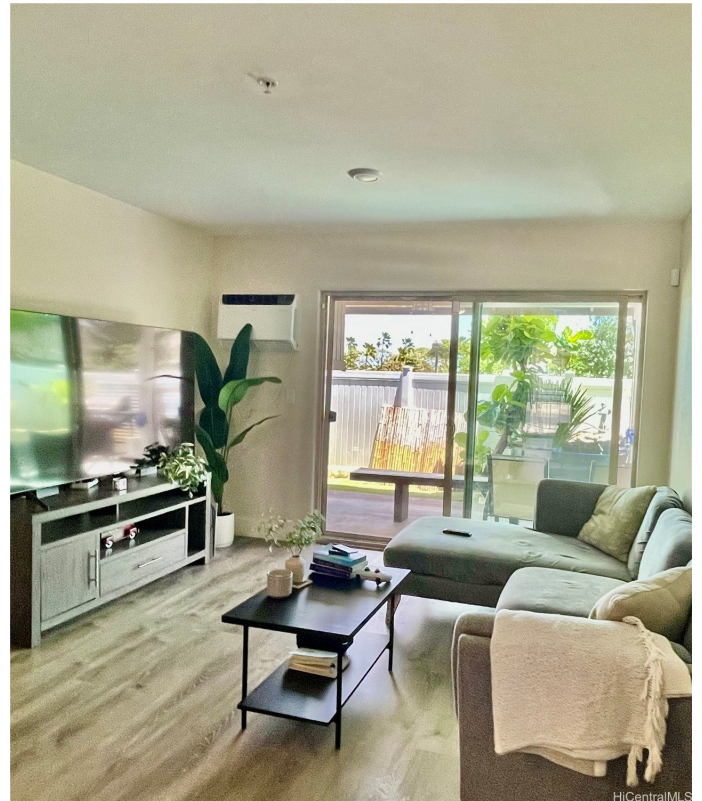
KAPOLEI, Kapolei, HI

Wonderful ground floor 2-bedroom, 2 full bathroom perimeter unit with a private backyard that includes a working pond and BBQ area perfect for entertaining guests and enjoying outdoor living. The back gate lets you conveniently access Villages of Kapolei Rec Center & Kapolei Community Park across the street. The 225 sq.ft. covered garage, you'll find constant conveniences with EZ access into your home. Intelligently designed, the unit features in unit Washer/Dryer, a walk-in closet, stainless steel range and oven, 2 toned interior living room, bedroom, and kitchen. Close proximity to the new Don Don Donki, Costco, Target, and Walmart. And shop to your hearts content at the nearby Ka Makana Ali'i Shopping Center where you'll find various retail stores and eateries like CPK, Cheesecake Factory, Five Guys and Olive Garden. Kapolei Elementary School is very conveniently located and can be easily accessed from this perfectly located unit. This is truly a home you do not want to miss out on whether it's your first home or if you are looking to downsize with Low-Maintenance Fees.

Built in 2012

## **Essential Information**

MLS® #                      202512229



Price	\$609,000
Bedrooms	2
Bathrooms	2.00
Full Baths	2
Square Footage	920
Acres	0.00
Year Built	2012
Type	Residential
Sub-Type	Condominium
Status	Active

### Community Information

Address	(unit #302) 91-1227 Kamaahā
Area	Ewaplain
Subdivision	KAPOLEI
City	Kapolei
County	Oahu
State	HI
Zip Code	96707
Condo Name	Nohona at Kapolei III

### Amenities

Parking Spaces	2
Parking	Assigned, Covered, Garage,
View	None, Other

### Interior

Interior Features	BedroomOnMainLevel,FullBa
Stories	One

### Exterior

Exterior	Double Wall, Other, Steel Fra
----------	-------------------------------

### School Information

Elementary	Kapolei
Middle	Kapolei
High	Kapolei

### Additional Information



Days on Market	147
HOA Fees	55
Lease Fee	\$0
Monthly Maintenance Fee	\$385

### **Listing Details**

Listing Office	RE/MAX Honolulu
----------------	-----------------

Based on information from the Multiple Listing Service of the HiCentral MLS®, Ltd. active listings last updated on October 11th, 2025 at 6:19pm HST. Information is deemed reliable but not guaranteed. Copyright: 2025 by the HiCentral MLS®, Ltd. Listing information is provided exclusively for consumers' personal, non-commercial use and may not be used for any purpose other than to identify prospective properties consumers may be interested in purchasing. Some of the active listings appearing on this site may be listed by other REALTORS®. If you are interested in those active listings, our company may represent you as the buyer's agent. If the active listing you are interested in is our company's active listing, you may speak to one of our agents regarding your options for representation.