

# \$449,000 - (unit #811) 3161 Ala Ilima Street, Honolulu

MLS® #202510924

**\$449,000**

2 Bedroom, 2.00 Bathroom, 795 sqft

Residential on 3.92 Acres

SALT LAKE, Honolulu, HI

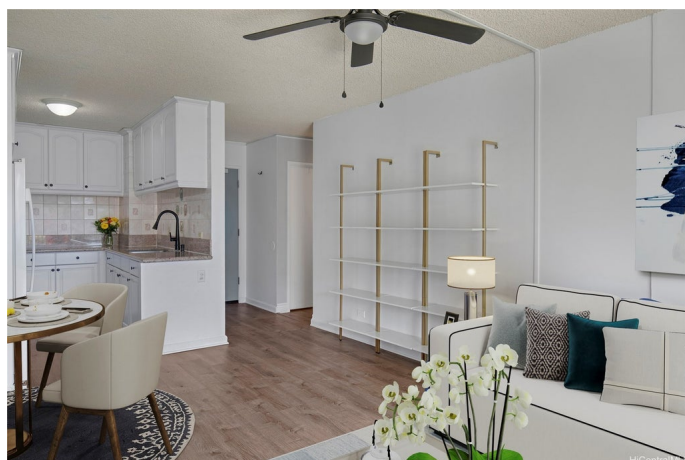
Move-in ready, this 2-bed, 2-bath, 1-parking unit at Century West offers 795 sq. ft. of beautifully updated interior space plus a breezy 75 sq. ft. lanai—perfect for relaxing or entertaining. Possible VA to VA loan assumption at 2.75%, approx. \$396K balance. Full hurricane insurance coverage. Recently upgraded with WiFi/Bluetooth-enabled A/C units, a new stove, modern ceiling fans and lighting, and tastefully renovated bathrooms featuring new vanities and refinished sinks, tub, and shower. Additional improvements include upgraded piping under the bathroom sinks and fresh interior paint. Have peace of mind with updated fire alarms in every unit and secured, key-fob access to the building. Century West is PET FRIENDLY with top-notch amenities including a well maintained pool, dog park, guest parking, BBQ areas, party room, playground, resident manager, bike storage, surfboard storage, and 24 hour security guards. Community laundry is very convenient with washers and dryers on every floor. Ideally located in Salt Lake, close to military bases, schools, shopping, and freeway access. Schedule your showing today!

Built in 1973

## Essential Information

MLS® # 202510924

Price \$449,000



Bedrooms	2
Bathrooms	2.00
Full Baths	2
Square Footage	795
Acres	3.92
Year Built	1973
Type	Residential
Sub-Type	Condominium
Style	High Rise
Status	Active Under Contract

### **Community Information**

Address	(unit #811) 3161 Ala Ilima Street
Area	Metro
Subdivision	SALT LAKE
City	Honolulu
County	Oahu
State	HI
Zip Code	96818
Condo Name	Century West

### **Amenities**

Parking Spaces	1
Parking	Assigned, Garage, Guest, On Street, One Space
View	Sunset

### **Interior**

Stories	One
---------	-----

### **Exterior**

Exterior	Masonry, Concrete, Stucco
----------	---------------------------

### **School Information**

Elementary	Aliamanu
Middle	Aliamanu
High	Moanalua

### **Additional Information**

Days on Market	156
----------------	-----

Lease Fee                \$0

Monthly Maintenance Fee    \$995

## **Listing Details**

Listing Office            Coldwell Banker Realty

Based on information from the Multiple Listing Service of the HiCentral MLS®, Ltd. active listings last updated on October 12th, 2025 at 10:20am HST. Information is deemed reliable but not guaranteed. Copyright: 2025 by the HiCentral MLS®, Ltd. Listing information is provided exclusively for consumers' personal, non-commercial use and may not be used for any purpose other than to identify prospective properties consumers may be interested in purchasing. Some of the active listings appearing on this site may be listed by other REALTORS®. If you are interested in those active listings, our company may represent you as the buyer's agent. If the active listing you are interested in is our company's active listing, you may speak to one of our agents regarding your options for representation.