

\$595,000 - (unit #1306) 1212 Nuuanu Avenue, Honolulu

MLS® #202510465

\$595,000

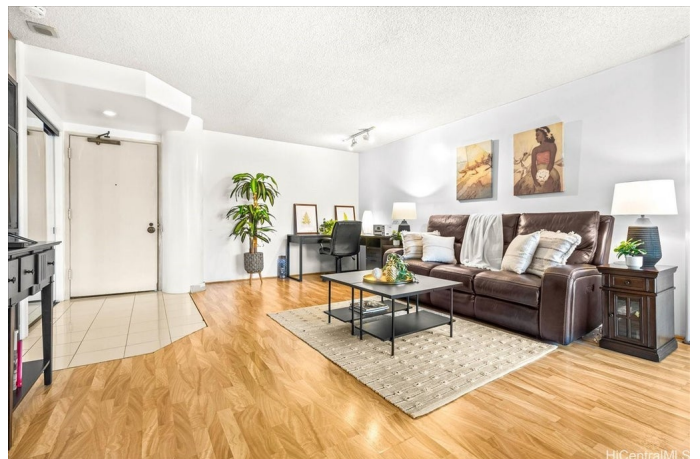
2 Bedroom, 2.00 Bathroom, 905 sqft

Residential on 0.84 Acres

CHINATOWN, Honolulu, HI

Tranquil Urban Living in the Heart of Honolulu. Welcome home to this serene, mountainside unit overlooking a peaceful koi pond, where the gentle sound of cascading waterfalls creates a true retreat in the city. Located on the cooler side of the building, this unit enjoys refreshing mountain breezes and features a spacious lanaiâ€”perfect for relaxing with your morning coffee or evening wine.

This pet-friendly home includes 1 parking stall and access to an impressive list of resort-style amenities: BBQ cabanas, koi ponds, a party room, tennis court, golf driving range, bowling lanes, two-story fitness center, basketball and racquetball courts, recreation areas, a heated pool, whirlpool spa, car wash station, and more. With 40 guest parking stalls, 24-hour security, and a dedicated resident manager, convenience and peace of mind come standard. Enjoy being moments from downtown Honoluluâ€™s financial district, vibrant Chinatown, hospitals, dining, shopping, and easy H-1 access. Whether you're looking for a convenient city base or a tranquil escape, this gem offers the best of both worlds. One of more photos have been enhanced



Built in 1989

Essential Information

MLS® # 202510465

Price \$595,000

Bedrooms	2
Bathrooms	2.00
Full Baths	2
Square Footage	905
Acres	0.84
Year Built	1989
Type	Residential
Sub-Type	Condominium
Style	High Rise
Status	Active

Community Information

Address	(unit #1306) 1212 Nuuanu Avenue
Area	Metro
Subdivision	CHINATOWN
City	Honolulu
County	Oahu
State	HI
Zip Code	96817
Condo Name	Honolulu Park Place

Amenities

Parking Spaces	1
Parking	Assigned, Covered, Garage, Guest, One Space
View	City, Mountain(s)
Has Pool	Yes

Interior

Interior Features	BedroomOnMainLevel,FullBathOnMainLevel,HandicapAccess,Storage
Stories	One

Exterior

Exterior	Double Wall, Concrete
----------	-----------------------

Additional Information

Days on Market	146
Lease Fee	\$0
Monthly Maintenance Fee	\$1,231

Listing Details

Based on information from the Multiple Listing Service of the HiCentral MLS®, Ltd. active listings last updated on October 12th, 2025 at 7:20pm HST. Information is deemed reliable but not guaranteed. Copyright: 2025 by the HiCentral MLS®, Ltd. Listing information is provided exclusively for consumers' personal, non-commercial use and may not be used for any purpose other than to identify prospective properties consumers may be interested in purchasing. Some of the active listings appearing on this site may be listed by other REALTORS®. If you are interested in those active listings, our company may represent you as the buyer's agent. If the active listing you are interested in is our company's active listing, you may speak to one of our agents regarding your options for representation.