

\$2,600,000 - (unit #1800) 1555 Kapiolani Boulevard, Honolulu

MLS® #202509941

\$2,600,000

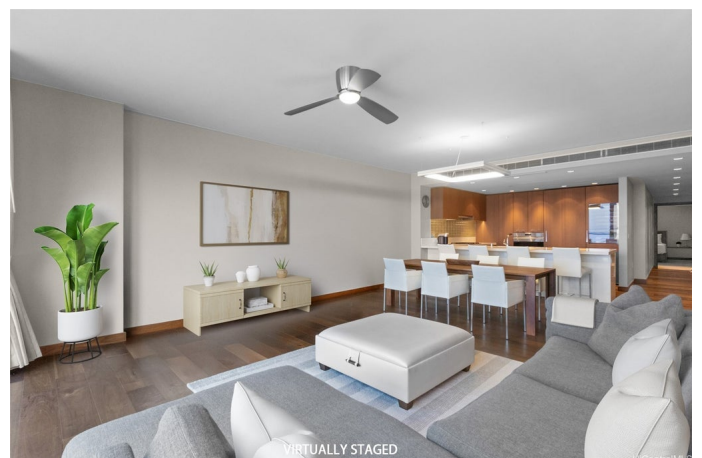
3 Bedroom, 3.00 Bathroom, 1,800 sqft
Residential on 0.00 Acres

ALA MOANA, Honolulu, HI

Discover a premium lifestyle within the luxurious One Ala Moana, located in one of Honolulu's most refined neighborhoods. This high-floor 3-bedroom, 1,800 sq ft residence offers breathtaking ocean and harbor views from the main living area, while the bedrooms are positioned on the cooler side of the building with lush mountain vistas. A spacious 93 sq ft climate-controlled storage room is included. Two side-by-side parking stalls are included, offering direct elevator access to the residence floor without the need to transfer. With direct access to Ala Moana Shopping Center and just minutes from the beach park's white sands and waves, this home offers the perfect balance of convenience, elegance, and island beauty. One Ala Moana provides resort-style living with world-class amenities including a saltwater pool, private cabanas, Chef's kitchen, BBQ areas, a fitness center, movie theater, children's playground, spa, guest suites, and dog parks in this pet-friendly residence. All furnishings can be included, making the transition effortless for the new owner. Luxury, comfort, and convenience come together in this exceptional home in the heart of Honolulu.

Built in 2014

Essential Information



MLS® #	202509941
Price	\$2,600,000
Bedrooms	3
Bathrooms	3.00
Full Baths	3
Square Footage	1,800
Acres	0.00
Year Built	2014
Type	Residential
Sub-Type	Condominium
Style	High Rise
Status	Active Under Contract

Community Information

Address	(unit #1800) 1555 Kapiolani Boulevard
Area	Metro
Subdivision	ALA MOANA
City	Honolulu
County	Oahu
State	HI
Zip Code	96814
Condo Name	One Ala Moana

Amenities

Parking Spaces	2
Parking	Assigned, Covered, Guest, Secured, Two Spaces
View	City, Ocean, Sunset

Interior

Interior Features	BedroomOnMainLevel,FullBathOnMainLevel,Storage
Stories	One

Exterior

Exterior	Concrete
----------	----------

Additional Information

Days on Market	150
Lease Fee	\$0
Monthly Maintenance Fee	\$3,021

Listing Details

Listing Office Coldwell Banker Realty

Based on information from the Multiple Listing Service of the HiCentral MLS®, Ltd. active listings last updated on October 13th, 2025 at 12:34am HST. Information is deemed reliable but not guaranteed. Copyright: 2025 by the HiCentral MLS®, Ltd. Listing information is provided exclusively for consumers' personal, non-commercial use and may not be used for any purpose other than to identify prospective properties consumers may be interested in purchasing. Some of the active listings appearing on this site may be listed by other REALTORS®. If you are interested in those active listings, our company may represent you as the buyer's agent. If the active listing you are interested in is our company's active listing, you may speak to one of our agents regarding your options for representation.