

\$449,000 - (unit #1306) 1925 Kalakaua Avenue, Honolulu

MLS® #202507851

\$449,000

1 Bedroom, 1.00 Bathroom, 546 sqft

Residential on 0.57 Acres

WAIKIKI, Honolulu, HI

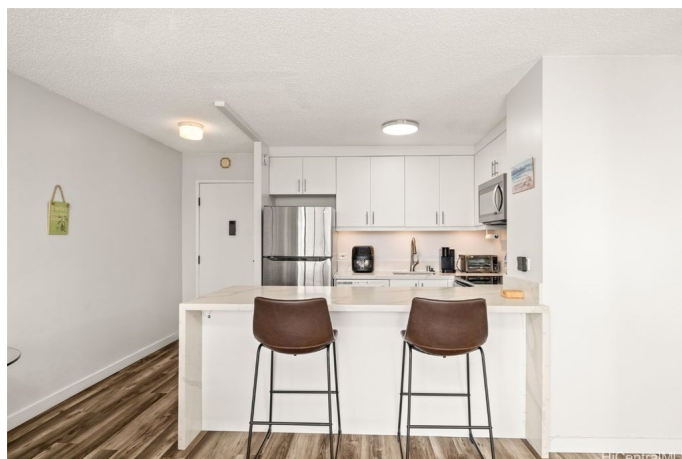
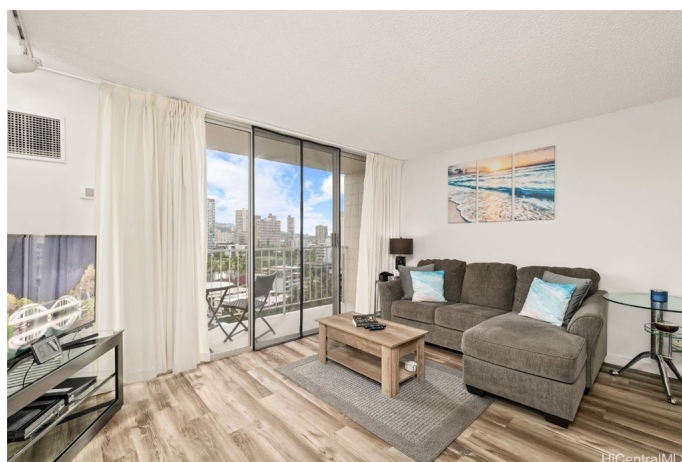
Priced competitively to sell, and seller is very motivated. Great time to make an offer! Lovely condo unit perfectly situated in an excellent location right at the entry point to Waikiki. Completely remodeled in 2022 with quartz countertops, vinyl plank flooring, new paint, new cabinets, and an updated bathroom. Conveniently equipped with a new washer and dryer in the unit. Central AC to keep you cool on hot summer days. Newly renovated rooftop amenities includes pool, men's and women's saunas, showers, restrooms, and a barbeque area. Secured entry, pet friendly, and VA approved building. Sold fully furnished and move in ready. Close proximity to restaurants, shops, parks, beaches, grocery stores, and Ala Moana Mall. Watch the Hilton Hawaiian firework show from the rooftop pool and grill area on Friday nights! 30+ day rentals allowed. Designated oversized, covered, and secure parking stall, with added bonus of guest parking. Includes additional personal storage space, and bike/surf rack available. Current tenant lease ends in August with possibility of renewal. This unit receives multiple rental applications when available. Wonderful investment property!

Built in 1975

Essential Information

MLS® # 202507851

Price \$449,000



Bedrooms	1
Bathrooms	1.00
Full Baths	1
Square Footage	546
Acres	0.57
Year Built	1975
Type	Residential
Sub-Type	Condominium
Style	High Rise
Status	Active

Community Information

Address	(unit #1306) 1925 Kalakaua Avenue
Area	Metro
Subdivision	WAIKIKI
City	Honolulu
County	Oahu
State	HI
Zip Code	96815
Condo Name	Pavilion at Waikiki

Amenities

Parking Spaces	1
Parking	Covered, Guest, One Space, Secured
View	City, Mountain(s)

Interior

Interior Features	FullBathOnMainLevel,Storage
Cooling	Central Air
Stories	One

Exterior

Exterior	Concrete, Double Wall, Other
----------	------------------------------

School Information

Elementary	Ala Wai
Middle	Washington
High	Mckinley

Additional Information

Days on Market 198
Lease Fee \$0
Monthly Maintenance Fee \$1,050

Listing Details

Listing Office Corcoran Pacific Properties

Based on information from the Multiple Listing Service of the HiCentral MLS®, Ltd. active listings last updated on October 13th, 2025 at 6:54am HST. Information is deemed reliable but not guaranteed. Copyright: 2025 by the HiCentral MLS®, Ltd. Listing information is provided exclusively for consumers' personal, non-commercial use and may not be used for any purpose other than to identify prospective properties consumers may be interested in purchasing. Some of the active listings appearing on this site may be listed by other REALTORS®. If you are interested in those active listings, our company may represent you as the buyer's agent. If the active listing you are interested in is our company's active listing, you may speak to one of our agents regarding your options for representation.