

# \$89,000 - (unit #c206) 425 Ena Road, Honolulu

MLS® #202507008

**\$89,000**

2 Bedroom, 1.00 Bathroom, 856 sqft

Residential on 0.00 Acres

WAIKIKI, Honolulu, HI

2-bedroom, 1-bath leasehold in the heart of Waikiki. This 856 sq. ft. second-floor unit offers city views and a peaceful Hawaiian atmosphere. The secured building features lush gardens, a pool, BBQ areas, a sundeck, and a library. Walking distance to beaches, shopping, and dining. Ideal for those seeking a relaxed island lifestyle close to urban conveniences.

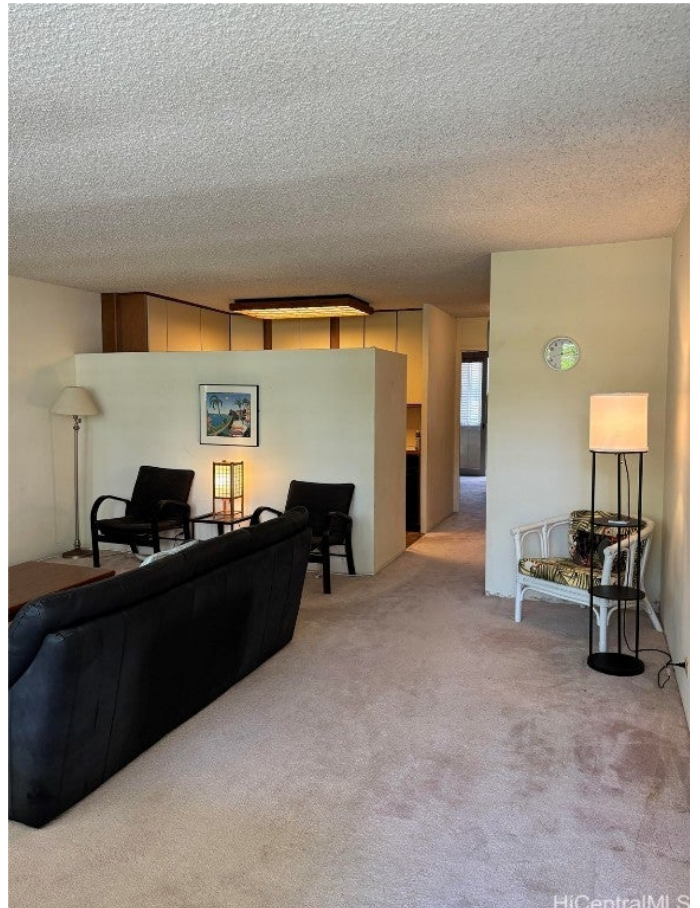
Built in 1958

## Essential Information

MLS® #	202507008
Price	\$89,000
Bedrooms	2
Bathrooms	1.00
Full Baths	1
Square Footage	856
Acres	0.00
Year Built	1958
Type	Residential
Sub-Type	Condominium
Style	High Rise
Status	Active

## Community Information

Address	(unit #c206) 425 Ena Road
Area	Metro
Subdivision	WAIKIKI



City	Honolulu
County	Oahu
State	HI
Zip Code	96815
Condo Name	Kalia

### **Amenities**

Parking	None
View	City
Has Pool	Yes

### **Exterior**

Exterior	Brick
----------	-------

### **Additional Information**

Days on Market	210
Lease Fee	\$1,118
Monthly Maintenance Fee	\$1,216

### **Listing Details**

Listing Office	Luxury Homes International
----------------	----------------------------

Based on information from the Multiple Listing Service of the HiCentral MLS®, Ltd. active listings last updated on October 12th, 2025 at 5:04pm HST. Information is deemed reliable but not guaranteed. Copyright: 2025 by the HiCentral MLS®, Ltd. Listing information is provided exclusively for consumers' personal, non-commercial use and may not be used for any purpose other than to identify prospective properties consumers may be interested in purchasing. Some of the active listings appearing on this site may be listed by other REALTORS®. If you are interested in those active listings, our company may represent you as the buyer's agent. If the active listing you are interested in is our company's active listing, you may speak to one of our agents regarding your options for representation.