

\$2,298,000 - (unit #900 & 901) 1100 Alakea Street, Honolulu

MLS® #202505042

\$2,298,000

0 Bedroom, 0.00 Bathroom,
Commercial Sale on 0.60 Acres

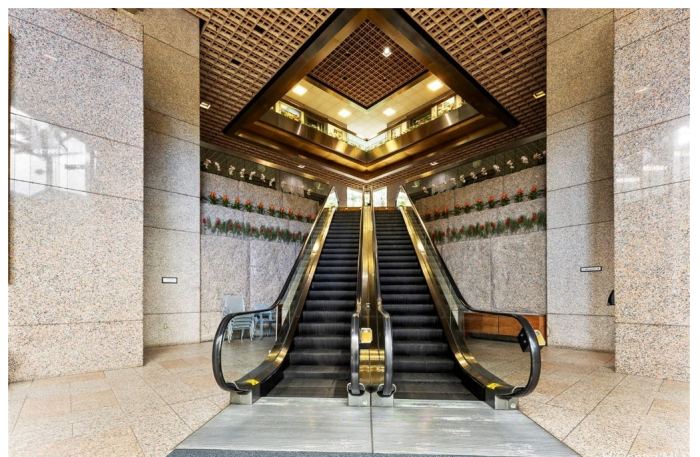
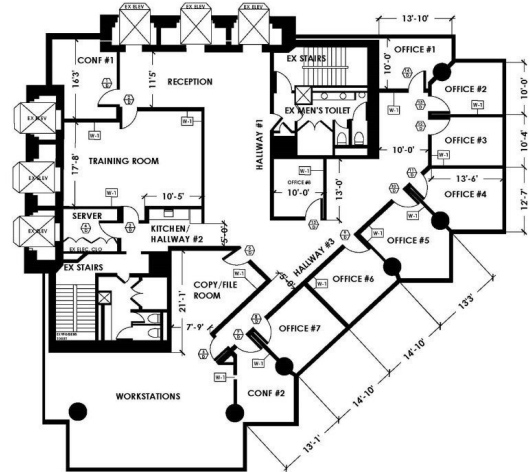
DOWNTOWN, Honolulu, HI

Own the 9th floor of Alakea Corporate Tower comprising two units #900 and #901 for a total of 4,457 square feet. This class A fee simple commercial office condominium has views of Downtown Honolulu, the Capitol District and the Koolau Mountains. Centrally located on the corner of Hotel and Alakea Street, across from the First Circuit Court, Ali'i Place, and Bishop Square with the State Capitol and Iolani Palace being minutes away. Ingress and egress are from the top of Bishop and Alakea Streets, saving you time getting in and out of Downtown Honolulu. The current configuration consists of 8 private offices with windows facing east, a large open administrative area kitchen, training room, conference room, lounge and additional interior bonus room. Comes with dedicated 8 parking stalls (4 stalls per unit) with AC, electricity and janitorial service included. A secured well managed building in Downtown Honolulu.

Built in 1993

Essential Information

| | |
|------------|-------------|
| MLS® # | 202505042 |
| Price | \$2,298,000 |
| Bathrooms | 0.00 |
| Acres | 0.60 |
| Year Built | 1993 |



| | |
|----------|-----------------|
| Type | Commercial Sale |
| Sub-Type | Industrial |
| Status | Active |

Community Information

| | |
|-------------|--------------------------------------|
| Address | (unit #900 & 901) 1100 Alakea Street |
| Area | Metro |
| Subdivision | DOWNTOWN |
| City | Honolulu |
| County | Oahu |
| State | HI |
| Zip Code | 96813 |
| Condo Name | Alakea Corporate Tower |

Amenities

| | |
|----------------|--|
| Utilities | Electricity Available, Sewer Connected |
| Parking Spaces | 8 |
| Parking | Assigned, On Site |

Interior

| | |
|---------|-------------|
| Cooling | Central Air |
| Stories | One |

Exterior

| | |
|----------|-----------------------|
| Exterior | Concrete, Metal Frame |
|----------|-----------------------|

Additional Information

| | |
|----------------|-----|
| Days on Market | 236 |
| Lease Fee | \$0 |

Listing Details

| | |
|----------------|-----------------------------|
| Listing Office | Coldwell Banker Island Prop |
|----------------|-----------------------------|

Based on information from the Multiple Listing Service of the HiCentral MLS®, Ltd. active listings last updated on October 14th, 2025 at 12:34am HST. Information is deemed reliable but not guaranteed. Copyright: 2025 by the HiCentral MLS®, Ltd. Listing information is provided exclusively for consumers' personal, non-commercial use and may not be used for any purpose other than to identify prospective properties consumers may be interested in purchasing. Some of the active listings appearing on this site may be listed by other REALTORS®. If you are interested in those active listings, our company may represent you as the buyer's agent. If the active listing you are interested in is our company's active listing, you may speak to one of our agents regarding your options for representation.